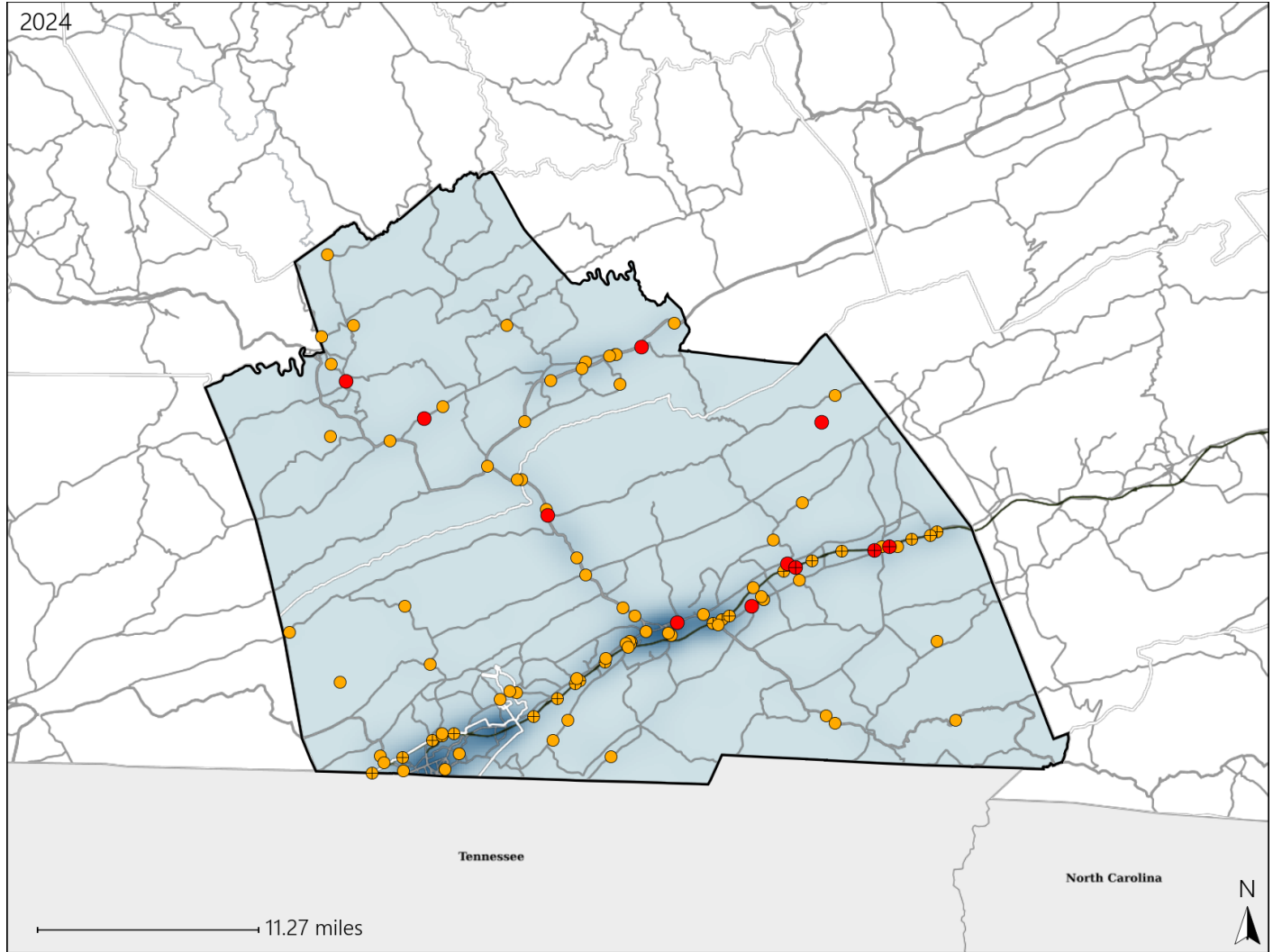


# Virginia House District 44 Crash Statistics

Report Generated March, 2025

	Count	Highest Time Period(s)	Highest Day(s)	Highest Month(s)
<b>Fatal Crashes</b>	<b>11</b>	<b>3:00pm - 5:59pm</b>	<b>Wednesday</b>	<b>December • June</b>
<b>Resulting Fatalities</b>	<b>11</b>	<b>(27%)</b>	<b>(36%)</b>	<b>(36%)</b>
<b>Serious Injury Crashes</b>	<b>88</b>	<b>3:00pm - 5:59pm</b>	<b>Saturday</b>	<b>July</b>
		<b>(27%)</b>	<b>(19%)</b>	<b>(16%)</b>



## House District 44 Crashes

Interstate Crashes

- Fatal
- Serious Injury

Non-interstate Crashes

- Fatal
- Serious Injury

The blue gradient represents the density of all crashes.

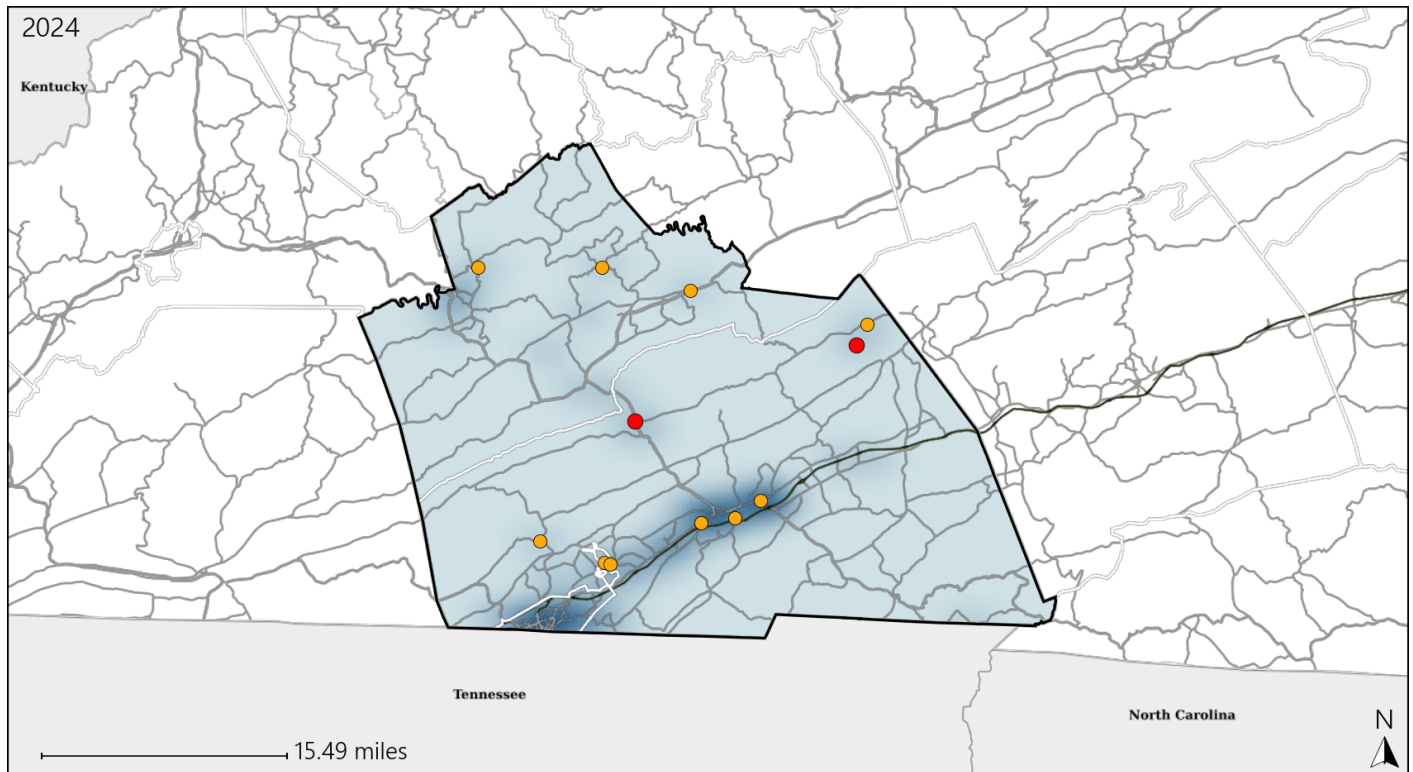


Available Crash Data - Calendar Year (CY)	CY 2021	CY 2022	CY 2023	CY 2024
Total Crashes	1519	1617	1687	1706
Fatal Crashes	13	13	13	11
Injury Crashes	475	540	576	584

# Virginia House District 44 Alcohol Crash Statistics

Report Generated March, 2025

	Count	Highest Time Period(s)	Highest Day(s)	Highest Month(s)
<b>Fatal Crashes</b>	<b>2</b>	3:00pm - 5:59pm	Sunday • Thursday	February • June
<b>Resulting Fatalities</b>	<b>2</b>	9:00pm - 11:59pm (100%)	(100%)	(100%)
<b>Serious Injury Crashes</b>	<b>10</b>	9:00pm - 11:59pm Midnight - 2:59am (60%)	Monday • Sunday (60%)	April • June (40%)



## House District 44 Alcohol-Related Crashes

Interstate Crashes

- Fatal
- Serious Injury

Non-interstate Crashes

- Fatal
- Serious Injury

The blue gradient represents the density of all alcohol-related crashes.

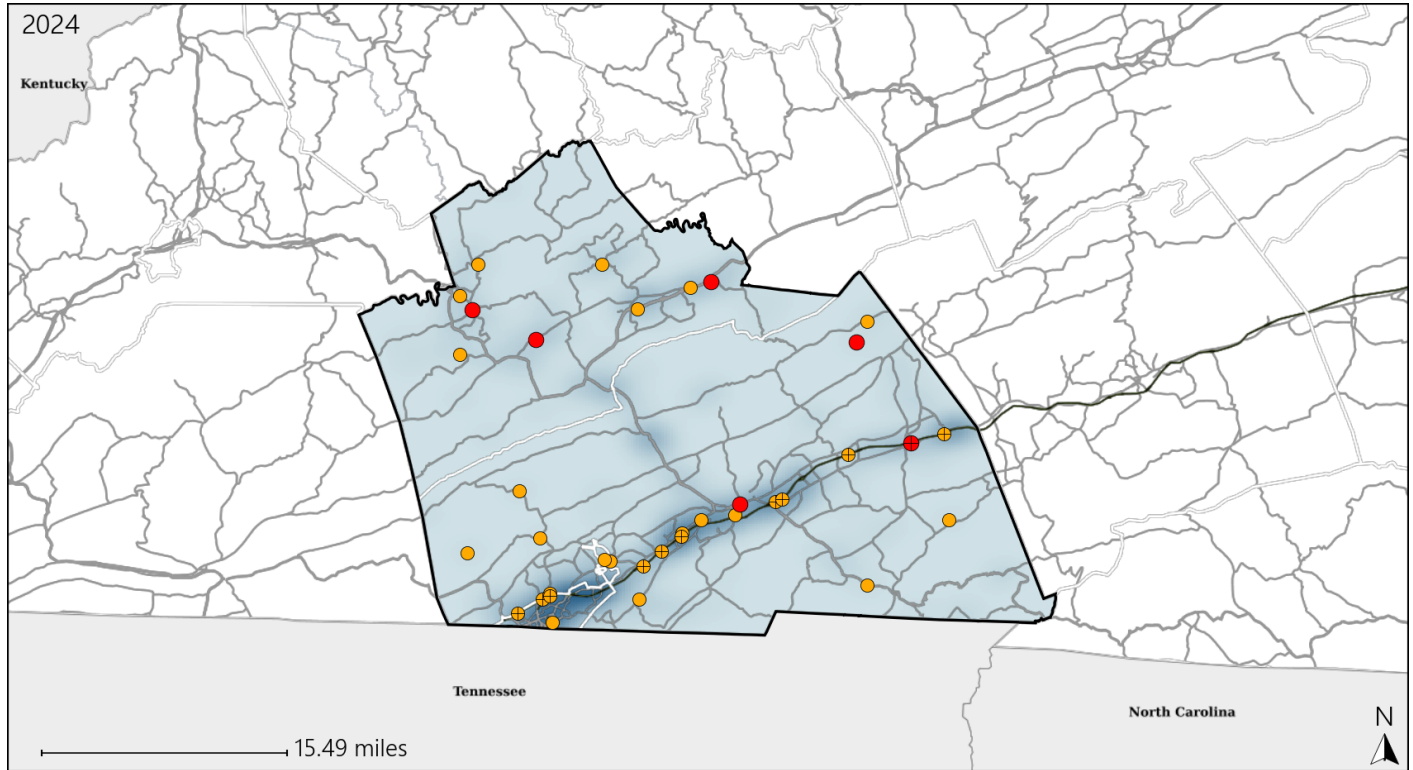


Available Crash Data - Calendar Year (CY)	CY 2021	CY 2022	CY 2023	CY 2024
Total Crashes	1519	1617	1687	1706
Fatal Crashes	13	13	13	11
Injury Crashes	475	540	576	584
Alcohol-Related Fatal Crashes	1	0	2	2
Percent of Alcohol-Related Fatal Crashes to Total Fatal Crashes	8%	0%	15%	18%
Alcohol-Related Injury Crashes	20	27	25	31
Percent of Alcohol-Related Injury Crashes to Total Injury Crashes	4%	5%	4%	5%

# Virginia House District 44 Speed Crash Statistics

Report Generated March, 2025

	Count	Highest Time Period(s)	Highest Day(s)	Highest Month(s)
<b>Fatal Crashes</b>	<b>6</b>	<b>3:00pm - 5:59pm</b>	<b>Wednesday</b>	<b>December • January</b>
<b>Resulting Fatalities</b>	<b>6</b>	<b>Noon - 2:59pm</b> (66%)	<b>(50%)</b>	<b>(34%)</b>
<b>Serious Injury Crashes</b>	<b>30</b>	<b>3:00pm - 5:59pm</b> (30%)	<b>Sunday</b> (23%)	<b>July</b> (27%)



## House District 44 Speed-Related Crashes

Interstate Crashes

Non-interstate Crashes

● Fatal

● Fatal

⊕ Serious Injury

⊕ Serious Injury

The blue gradient represents the density of all speed-related crashes.

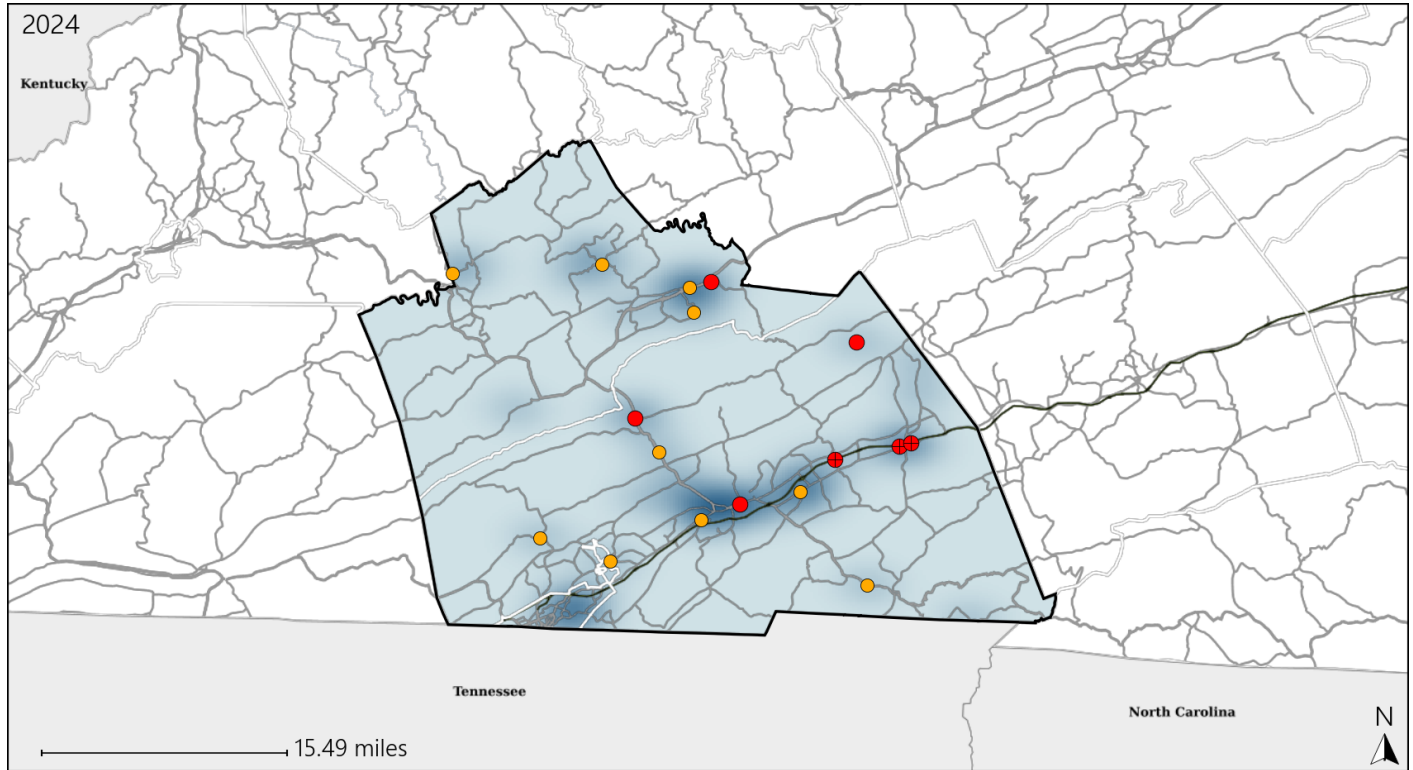


Available Crash Data - Calendar Year (CY)	CY 2021	CY 2022	CY 2023	CY 2024
Total Crashes	1519	1617	1687	1706
Fatal Crashes	13	13	13	11
Injury Crashes	475	540	576	584
Speed-Related Fatal Crashes	3	4	4	6
Percent of Speed-Related Fatal Crashes to Total Fatal Crashes	23%	31%	31%	55%
Speed-Related Injury Crashes	141	130	122	145
Percent of Speed-Related Injury Crashes to Total Injury Crashes	30%	24%	21%	25%

# Virginia House District 44 Unrestrained Crash Statistics

Report Generated March, 2025

	Count	Highest Time Period(s)	Highest Day(s)	Highest Month(s)
<b>Fatal Crashes</b>	<b>7</b>	<b>3:00pm - 5:59pm</b>	<b>Wednesday</b>	<b>December • June</b>
<b>Unrestrained Fatalities</b>	<b>7</b>	<b>6:00pm - 8:59pm</b> (58%)	(43%)	(58%)
<b>Serious Injury Crashes</b>	<b>10</b>	<b>Midnight - 2:59am</b> (40%)	<b>Sunday</b> (30%)	<b>April • June</b> (40%)



## House District 44 Unrestrained-Related Crashes

Interstate Crashes

Non-interstate Crashes

● Fatal

● Fatal

● Serious Injury

● Serious Injury

The blue gradient represents the density of all unrestrained-related crashes.

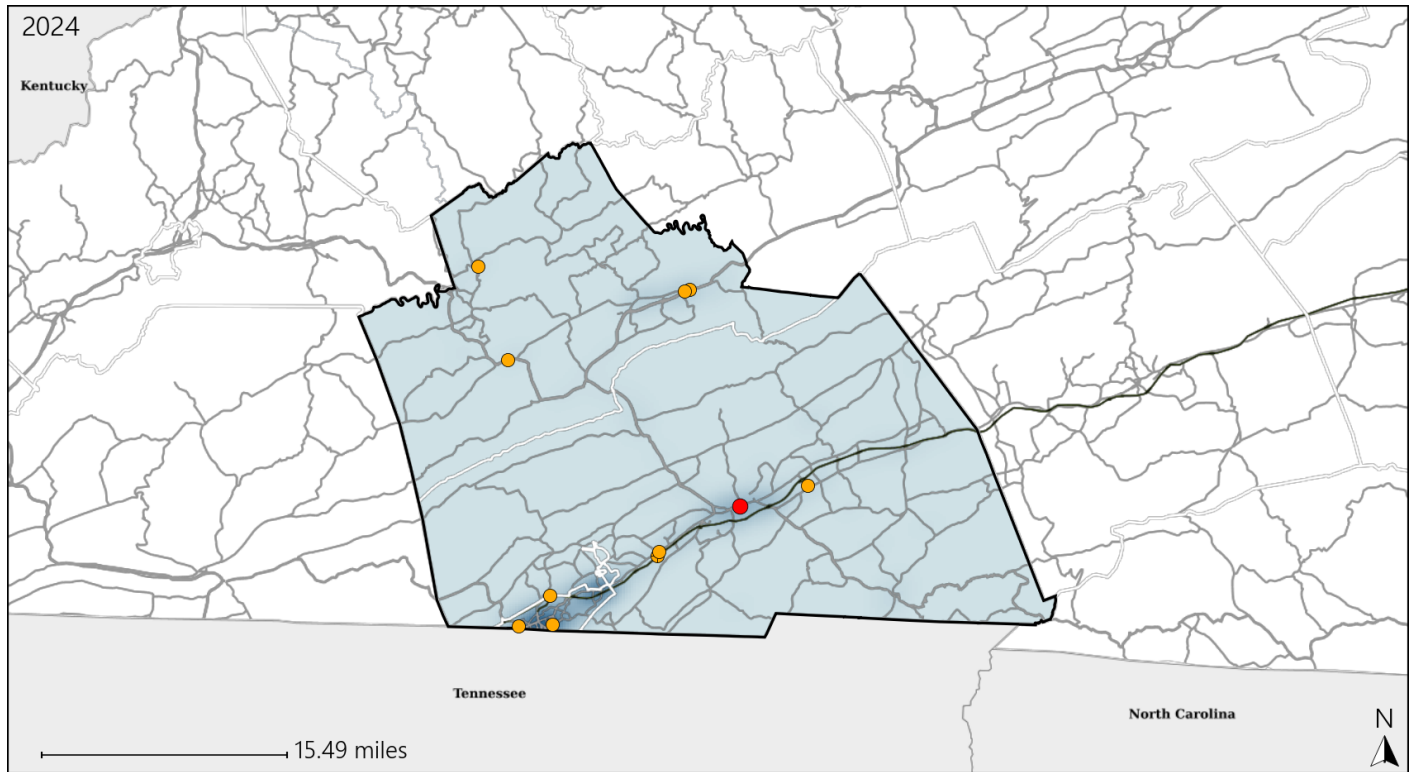


Available Crash Data - Calendar Year (CY)	CY 2021	CY 2022	CY 2023	CY 2024
Total Crashes	1519	1617	1687	1706
Fatalities	15	15	14	11
Injuries	642	766	833	881
Unrestrained Fatalities	5	4	2	7
Percent of Unrestrained Fatalities to Total Fatalities	33%	27%	14%	64%
Unrestrained Injuries	38	60	50	44
Percent of Unrestrained Injuries to Total Injuries	6%	8%	6%	5%

# Virginia House District 44 Distracted Driving Crash Statistics

Report Generated March, 2025



	Count	Highest Time Period(s)	Highest Day(s)	Highest Month(s)
<b>Fatal Crashes</b>	<b>1</b>	<b>3:00pm - 5:59pm</b>	<b>Wednesday</b>	<b>January</b>
<b>Resulting Fatalities</b>	<b>1</b>	<b>(100%)</b>	<b>(100%)</b>	<b>(100%)</b>
<b>Serious Injury Crashes</b>	<b>10</b>	<b>3:00pm - 5:59pm</b> <b>6:00am - 8:59am</b>	<b>Friday</b>	<b>August</b>
		<b>(40%)</b>	<b>(30%)</b>	<b>(30%)</b>



## House District 44 Distracted Driving-Related Crashes

Interstate Crashes

Non-interstate Crashes

 Fatal Fatal Serious Injury Serious Injury

The blue gradient represents the density of all distracted driving-related crashes.



Available Crash Data - Calendar Year (CY)	CY 2021	CY 2022	CY 2023	CY 2024
Total Crashes	1519	1617	1687	1706
Fatal Crashes	13	13	13	11
Injury Crashes	475	540	576	584
Distracted Driving-Related Fatal Crashes	3	1	0	1
Percent of Distracted Driving-Related Fatal Crashes to Total Fatal Crashes	23%	8%	0%	9%
Distracted Driving-Related Injury Crashes	90	83	98	105
Percent of Distracted Driving-Related Injury Crashes to Total Injury Crashes	19%	15%	17%	18%