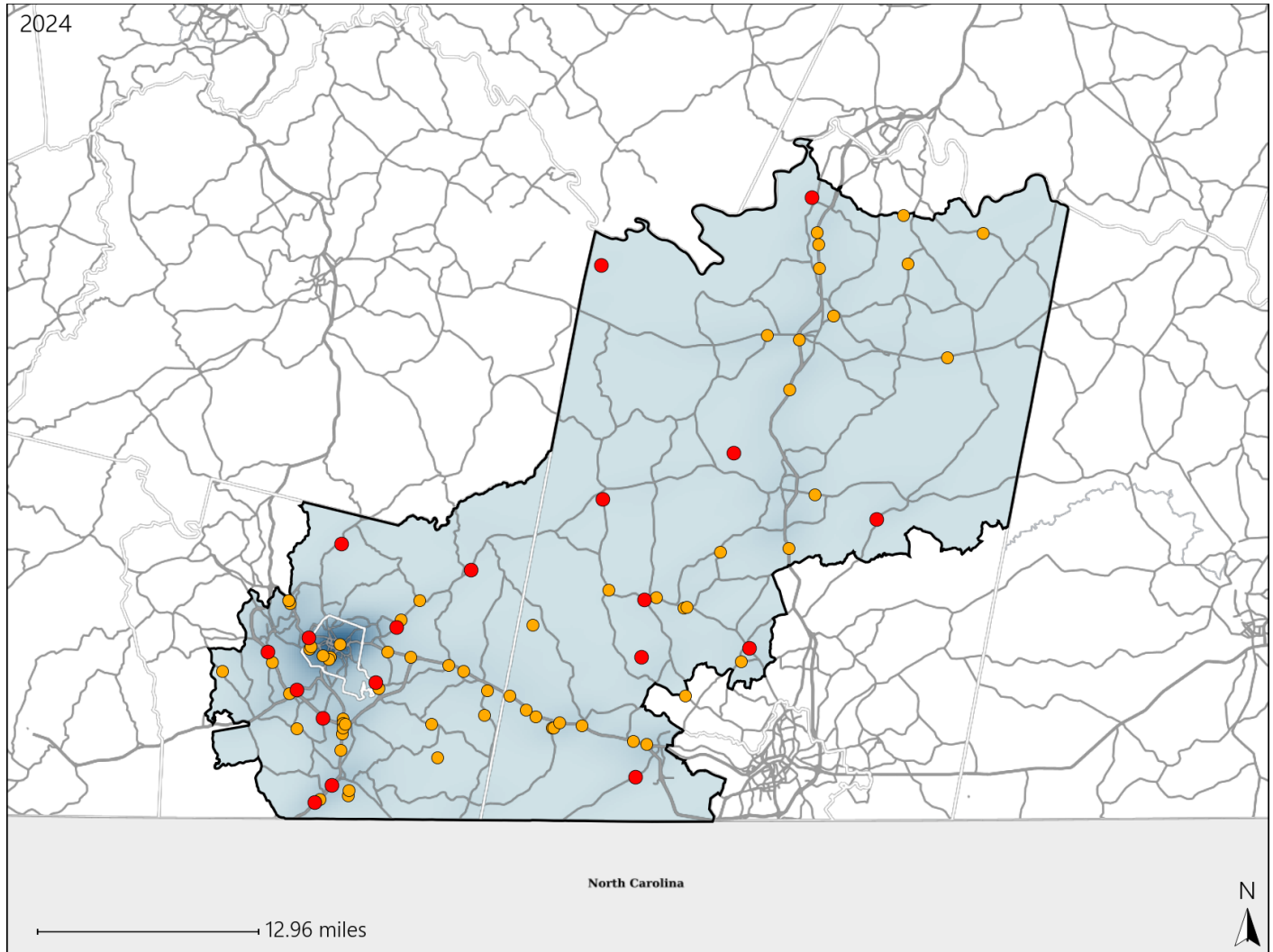


Virginia House District 48 Crash Statistics

Report Generated March, 2025

| | Count | Highest Time Period(s) | Highest Day(s) | Highest Month(s) |
|-------------------------------|-----------|------------------------|----------------|------------------|
| Fatal Crashes | 19 | Noon - 2:59pm | Friday | May • September |
| Resulting Fatalities | 21 | (26%) | (26%) | (42%) |
| Serious Injury Crashes | 63 | Noon - 2:59pm | Sunday | October |
| | | (24%) | (21%) | (16%) |



House District 48 Crashes

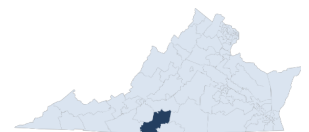
Interstate Crashes

- Fatal
- Serious Injury

Non-interstate Crashes

- Fatal
- Serious Injury

The blue gradient represents the density of all crashes.

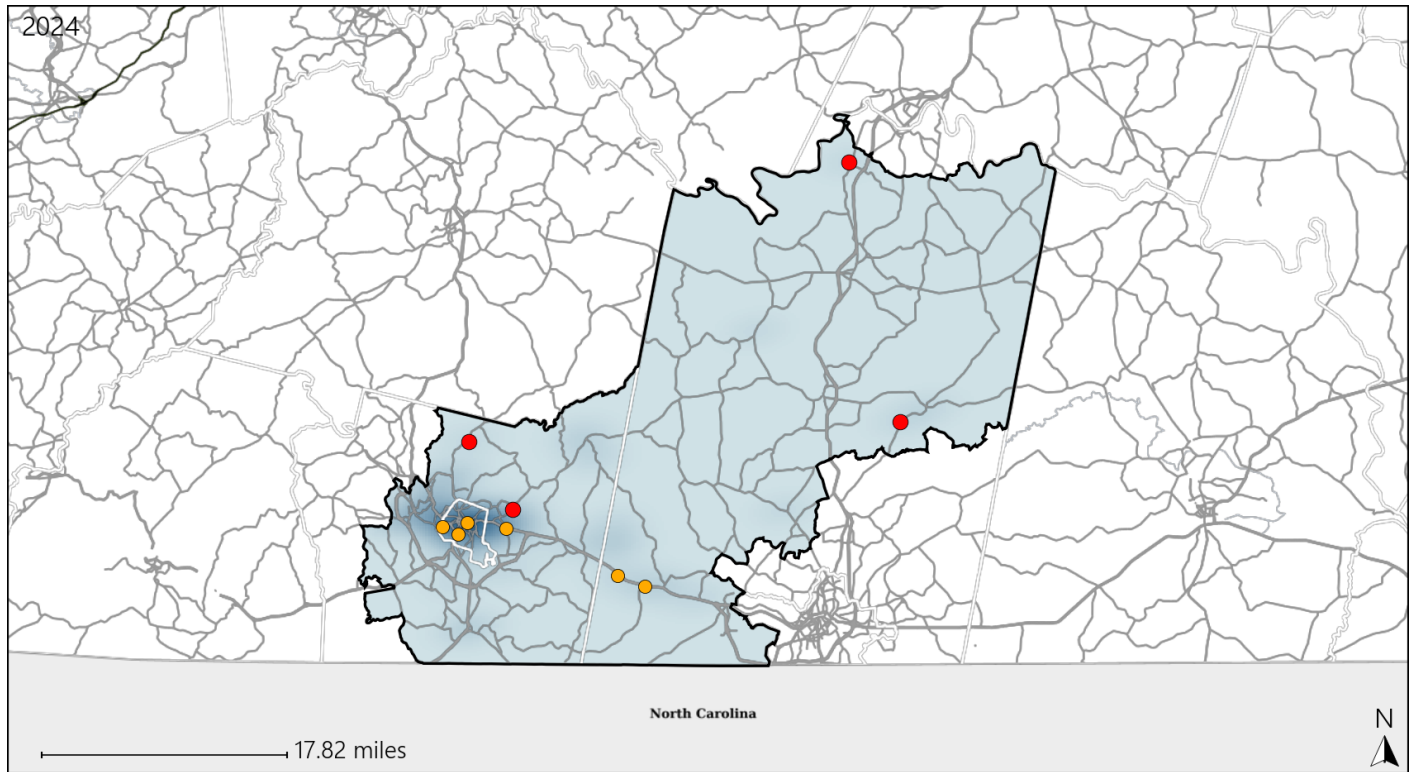


| Available Crash Data - Calendar Year (CY) | CY 2021 | CY 2022 | CY 2023 | CY 2024 |
|-------------------------------------------|---------|---------|---------|---------|
| Total Crashes | 1225 | 1231 | 1320 | 1184 |
| Fatal Crashes | 14 | 19 | 13 | 19 |
| Injury Crashes | 344 | 362 | 356 | 338 |

Virginia House District 48 Alcohol Crash Statistics

Report Generated March, 2025



| | Count | Highest Time Period(s) | Highest Day(s) | Highest Month(s) |
|-------------------------------|----------|--------------------------|----------------|-------------------------|
| Fatal Crashes | 4 | Midnight - 2:59am | Tuesday | April - February |
| Resulting Fatalities | 5 | (50%) | (50%) | (50%) |
| Serious Injury Crashes | 6 | 6:00pm - 8:59pm | Sunday | December |
| | | 9:00pm - 11:59pm | (50%) | (33%) |
| | | (66%) | | |



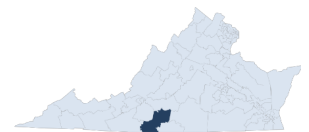
House District 48 Alcohol-Related Crashes

Interstate Crashes

Non-interstate Crashes

 Fatal Fatal Serious Injury Serious Injury

The blue gradient represents the density of all alcohol-related crashes.

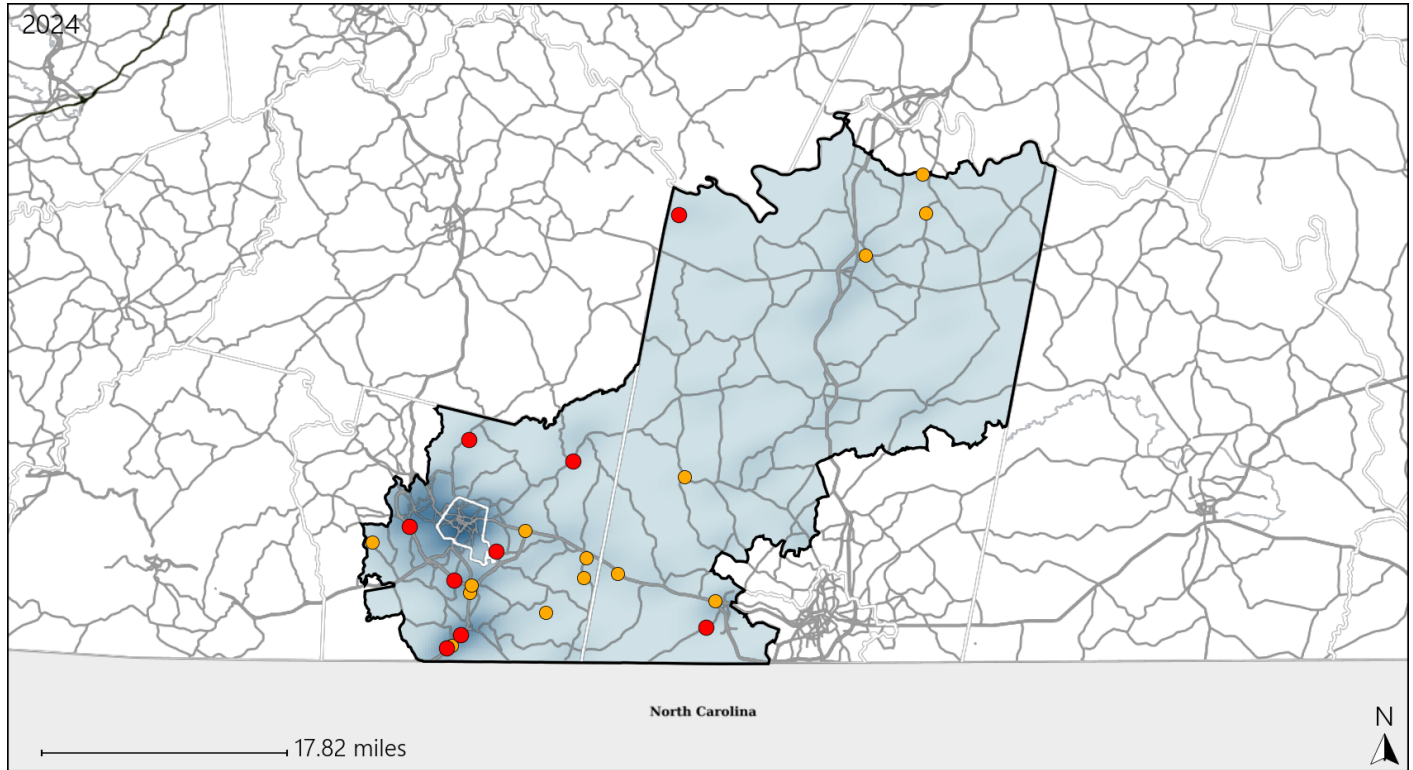


| Available Crash Data - Calendar Year (CY) | CY 2021 | CY 2022 | CY 2023 | CY 2024 |
|-------------------------------------------------------------------|---------|---------|---------|---------|
| Total Crashes | 1225 | 1231 | 1320 | 1184 |
| Fatal Crashes | 14 | 19 | 13 | 19 |
| Injury Crashes | 344 | 362 | 356 | 338 |
| Alcohol-Related Fatal Crashes | 6 | 3 | 1 | 4 |
| Percent of Alcohol-Related Fatal Crashes to Total Fatal Crashes | 43% | 16% | 8% | 21% |
| Alcohol-Related Injury Crashes | 18 | 37 | 22 | 22 |
| Percent of Alcohol-Related Injury Crashes to Total Injury Crashes | 5% | 10% | 6% | 7% |

Virginia House District 48 Speed Crash Statistics

Report Generated March, 2025

| | Count | Highest Time Period(s) | Highest Day(s) | Highest Month(s) |
|-------------------------------|-----------|--------------------------|------------------|------------------|
| Fatal Crashes | 9 | Midnight - 2:59am | Friday | May |
| Resulting Fatalities | 10 | Noon - 2:59pm (44%) | (44%) | (33%) |
| Serious Injury Crashes | 14 | 3:00pm - 5:59pm (36%) | Tuesday (21%) | June (21%) |



House District 48 Speed-Related Crashes

Interstate Crashes

Non-interstate Crashes

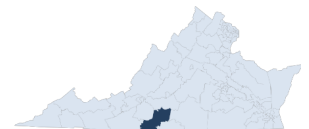
● Fatal

● Fatal

● Serious Injury

● Serious Injury

The blue gradient represents the density of all speed-related crashes.

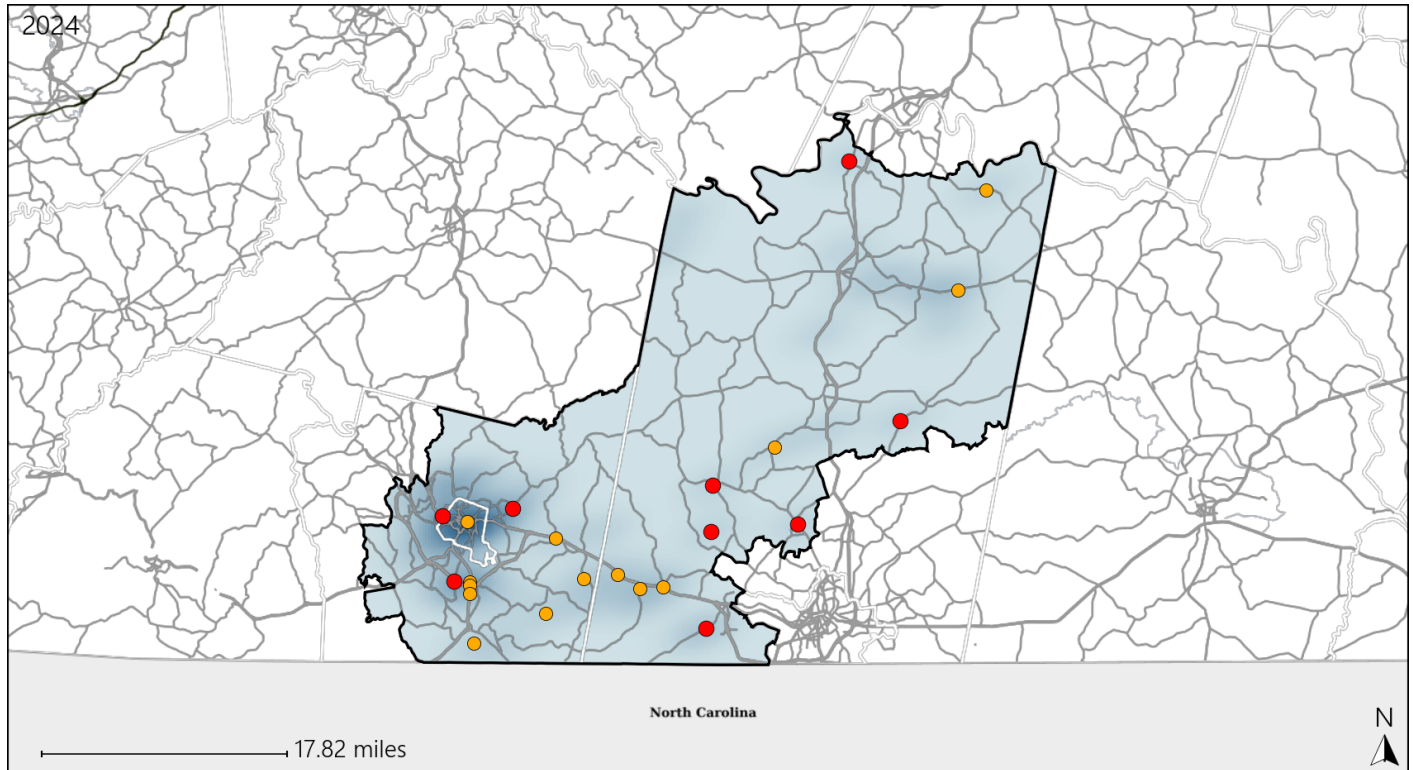


| Available Crash Data - Calendar Year (CY) | CY 2021 | CY 2022 | CY 2023 | CY 2024 |
|-----------------------------------------------------------------|---------|---------|---------|---------|
| Total Crashes | 1225 | 1231 | 1320 | 1184 |
| Fatal Crashes | 14 | 19 | 13 | 19 |
| Injury Crashes | 344 | 362 | 356 | 338 |
| Speed-Related Fatal Crashes | 4 | 11 | 4 | 9 |
| Percent of Speed-Related Fatal Crashes to Total Fatal Crashes | 29% | 58% | 31% | 47% |
| Speed-Related Injury Crashes | 80 | 88 | 85 | 80 |
| Percent of Speed-Related Injury Crashes to Total Injury Crashes | 23% | 24% | 24% | 24% |

Virginia House District 48 Unrestrained Crash Statistics

Report Generated March, 2025

| | Count | Highest Time Period(s) | Highest Day(s) | Highest Month(s) |
|--------------------------------|-----------|----------------------------------------------|------------------|------------------------------|
| Fatal Crashes | 9 | 3:00pm - 5:59pm | Monday • Tuesday | May |
| Unrestrained Fatalities | 9 | 9:00am - 11:59am (44%) | (44%) | (33%) |
| Serious Injury Crashes | 14 | 6:00am - 8:59am 9:00pm - 11:59pm (42%) | Sunday (29%) | February • November (42%) |



House District 48 Unrestrained-Related Crashes

Interstate Crashes

Non-interstate Crashes

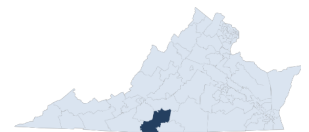
● Fatal

● Fatal

⊕ Serious Injury

⊕ Serious Injury

The blue gradient represents the density of all unrestrained-related crashes.

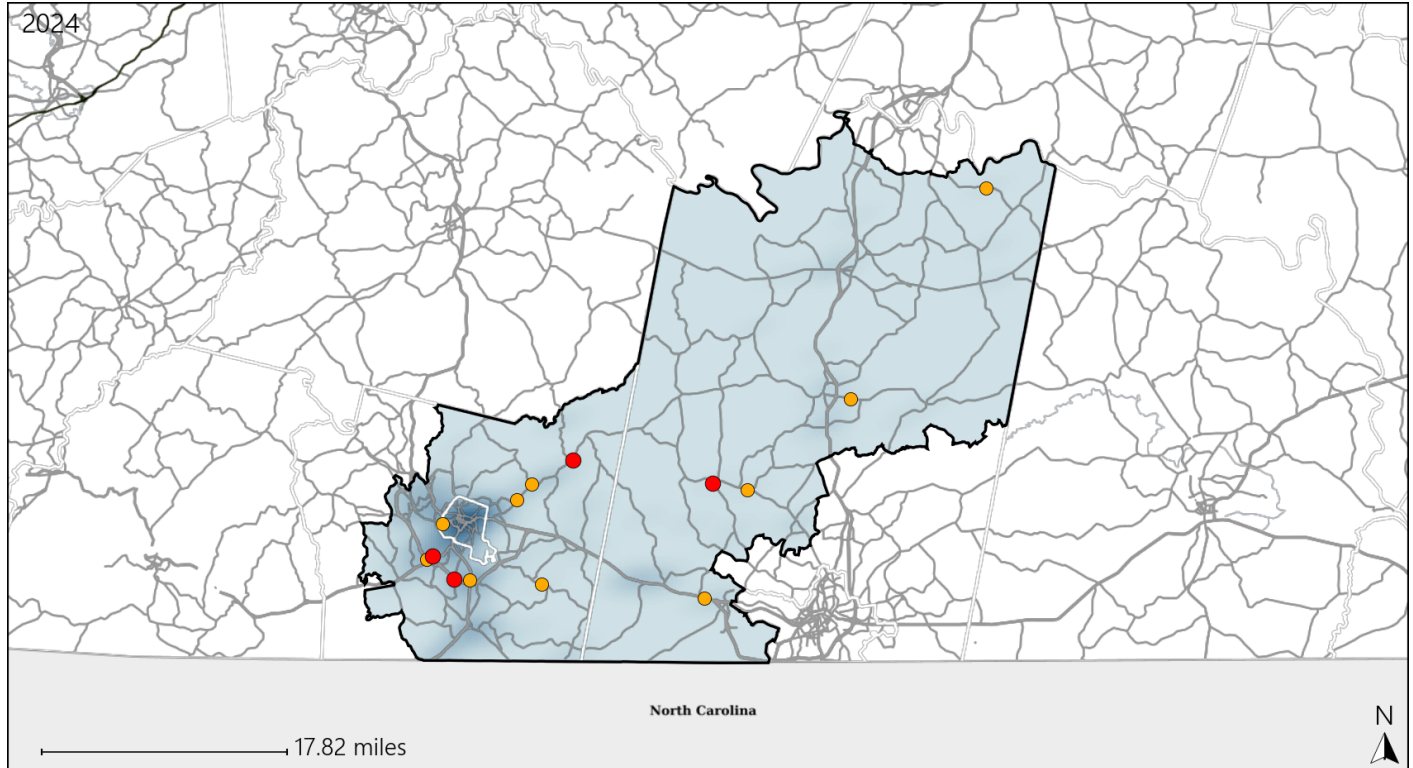


| Available Crash Data - Calendar Year (CY) | CY 2021 | CY 2022 | CY 2023 | CY 2024 |
|--------------------------------------------------------|---------|---------|---------|---------|
| Total Crashes | 1225 | 1231 | 1320 | 1184 |
| Fatalities | 14 | 19 | 13 | 21 |
| Injuries | 486 | 495 | 526 | 497 |
| Unrestrained Fatalities | 7 | 9 | 5 | 9 |
| Percent of Unrestrained Fatalities to Total Fatalities | 50% | 47% | 38% | 43% |
| Unrestrained Injuries | 70 | 75 | 62 | 60 |
| Percent of Unrestrained Injuries to Total Injuries | 14% | 15% | 12% | 12% |

Virginia House District 48 Distracted Driving Crash Statistics

Report Generated March, 2025

| | Count | Highest Time Period(s) | Highest Day(s) | Highest Month(s) |
|-------------------------------|-----------|------------------------|------------------------|------------------------|
| Fatal Crashes | 4 | 3:00pm - 5:59pm | Friday • Monday | September |
| Resulting Fatalities | 5 | (50%) | (50%) | (50%) |
| Serious Injury Crashes | 10 | Noon - 2:59pm | Sunday | December • June |
| | | (40%) | (30%) | (40%) |



House District 48 Distracted Driving-Related Crashes

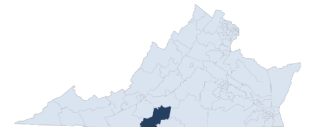
Interstate Crashes

Non-interstate Crashes

- Fatal
- Serious Injury

- Fatal
- Serious Injury

The blue gradient represents the density of all distracted driving-related crashes.



| Available Crash Data - Calendar Year (CY) | CY 2021 | CY 2022 | CY 2023 | CY 2024 |
|------------------------------------------------------------------------------|---------|---------|---------|---------|
| Total Crashes | 1225 | 1231 | 1320 | 1184 |
| Fatal Crashes | 14 | 19 | 13 | 19 |
| Injury Crashes | 344 | 362 | 356 | 338 |
| Distracted Driving-Related Fatal Crashes | 0 | 5 | 0 | 4 |
| Percent of Distracted Driving-Related Fatal Crashes to Total Fatal Crashes | 0% | 26% | 0% | 21% |
| Distracted Driving-Related Injury Crashes | 43 | 49 | 46 | 56 |
| Percent of Distracted Driving-Related Injury Crashes to Total Injury Crashes | 13% | 14% | 13% | 17% |