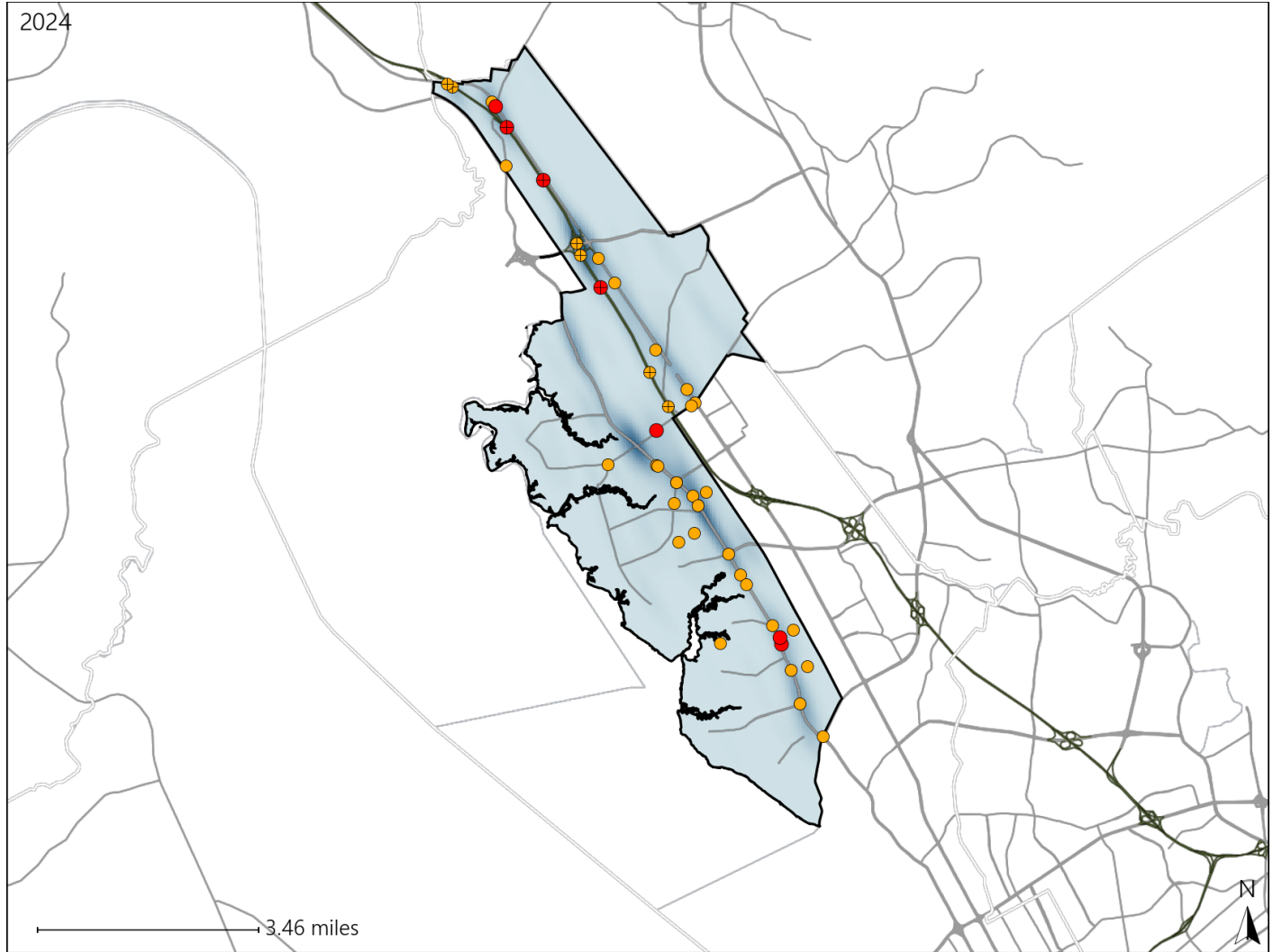


Virginia House District 70 Crash Statistics

Report Generated March, 2025

	Count	Highest Time Period(s)	Highest Day(s)	Highest Month(s)
Fatal Crashes	7	6:00pm - 8:59pm	Sunday	April • January
Resulting Fatalities	9	(43%)	(43%)	(28%)
Serious Injury Crashes	36	9:00pm - 11:59pm	Thursday • Tuesday	May
		(25%)	(38%)	(17%)



House District 70 Crashes

Interstate Crashes

- Fatal
- Serious Injury

Non-interstate Crashes

- Fatal
- Serious Injury

The blue gradient represents the density of all crashes.

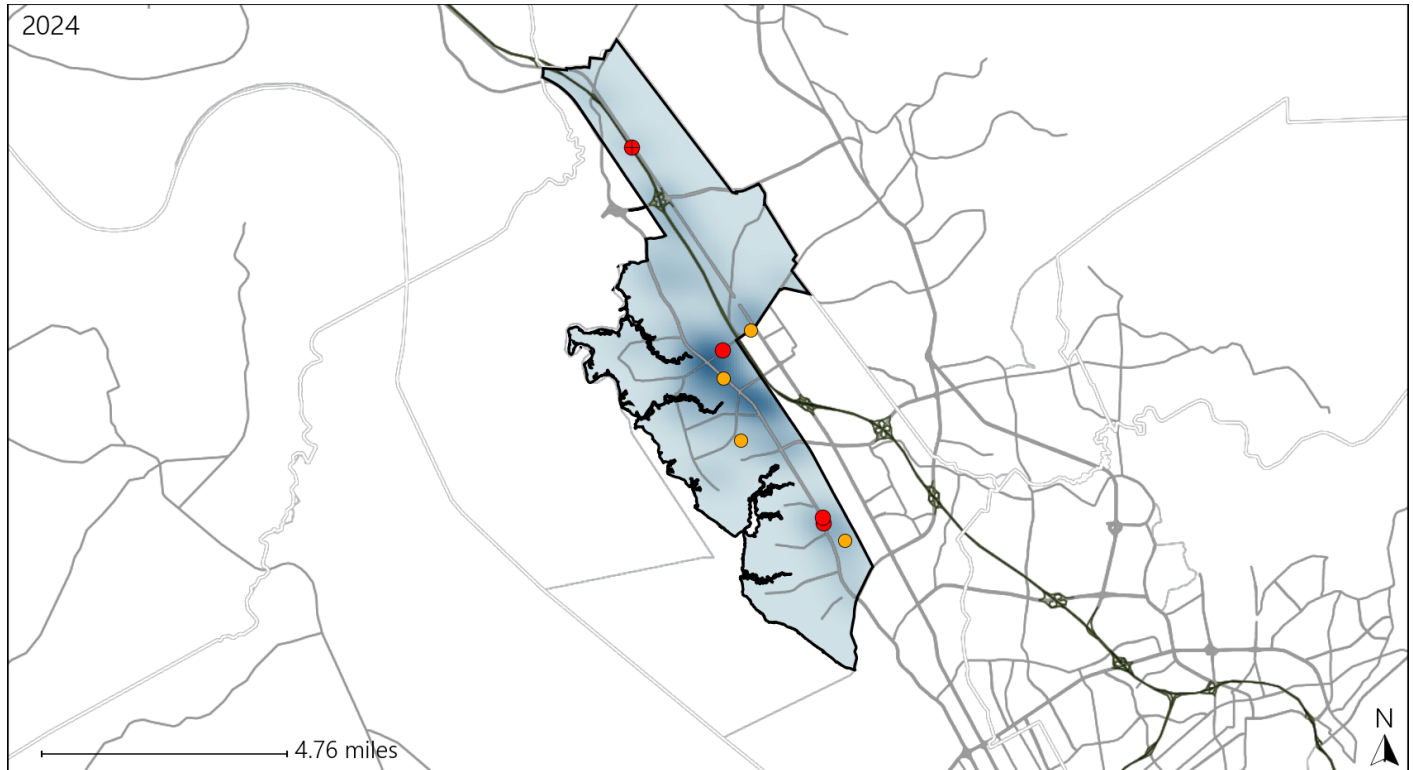


Available Crash Data - Calendar Year (CY)	CY 2021	CY 2022	CY 2023	CY 2024
Total Crashes	910	861	951	882
Fatal Crashes	7	3	3	7
Injury Crashes	368	265	251	247

Virginia House District 70 Alcohol Crash Statistics

Report Generated March, 2025

	Count	Highest Time Period(s)	Highest Day(s)	Highest Month(s)
Fatal Crashes	4	6:00pm - 8:59pm	Saturday	April • June
Resulting Fatalities	4	(50%)	(50%)	(50%)
Serious Injury Crashes	4	Midnight - 2:59am	Sunday	March • May
		(50%)	(50%)	(50%)



House District 70 Alcohol-Related Crashes

Interstate Crashes

Non-interstate Crashes

- Fatal
- Serious Injury

- Fatal
- Serious Injury

The blue gradient represents the density of all alcohol-related crashes.



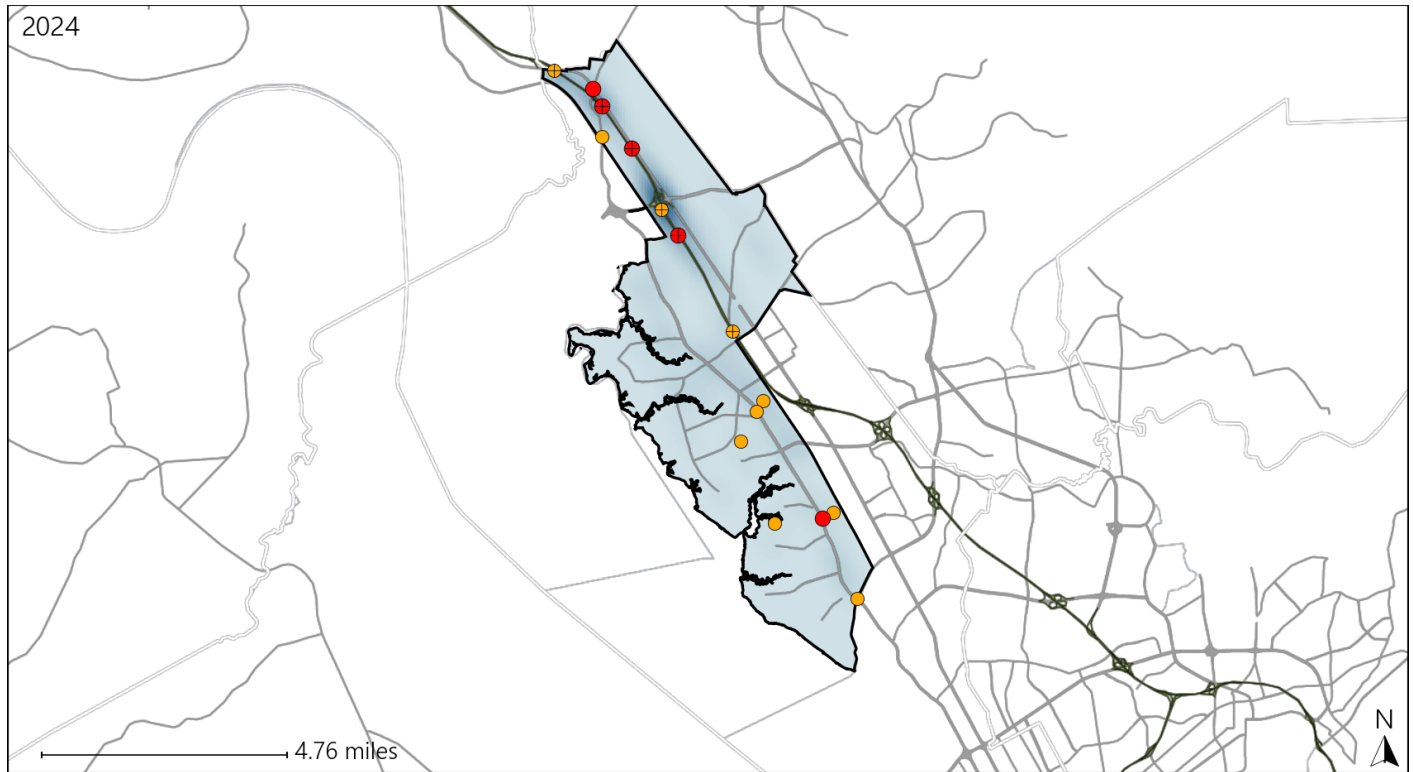
Available Crash Data - Calendar Year (CY)	CY 2021	CY 2022	CY 2023	CY 2024
Total Crashes	910	861	951	882
Fatal Crashes	7	3	3	7
Injury Crashes	368	265	251	247
Alcohol-Related Fatal Crashes	3	1	1	4
Percent of Alcohol-Related Fatal Crashes to Total Fatal Crashes	43%	33%	33%	57%
Alcohol-Related Injury Crashes	26	24	23	18
Percent of Alcohol-Related Injury Crashes to Total Injury Crashes	7%	9%	9%	7%

Report of Crashes for January 1st - December 31st, 2024

Virginia House District 70 Speed Crash Statistics

Report Generated March, 2025

	Count	Highest Time Period(s)	Highest Day(s)	Highest Month(s)
Fatal Crashes	5	6:00pm - 8:59pm (40%)	Saturday • Sunday (80%)	January • June (40%)
Resulting Fatalities	7			
Serious Injury Crashes	10	3:00am - 5:59am Midnight - 2:59am (60%)	Sunday (30%)	February • May (40%)



House District 70 Speed-Related Crashes

Interstate Crashes

Non-interstate Crashes

● Fatal

● Fatal

⊕ Serious Injury

⊕ Serious Injury

The blue gradient represents the density of all speed-related crashes.

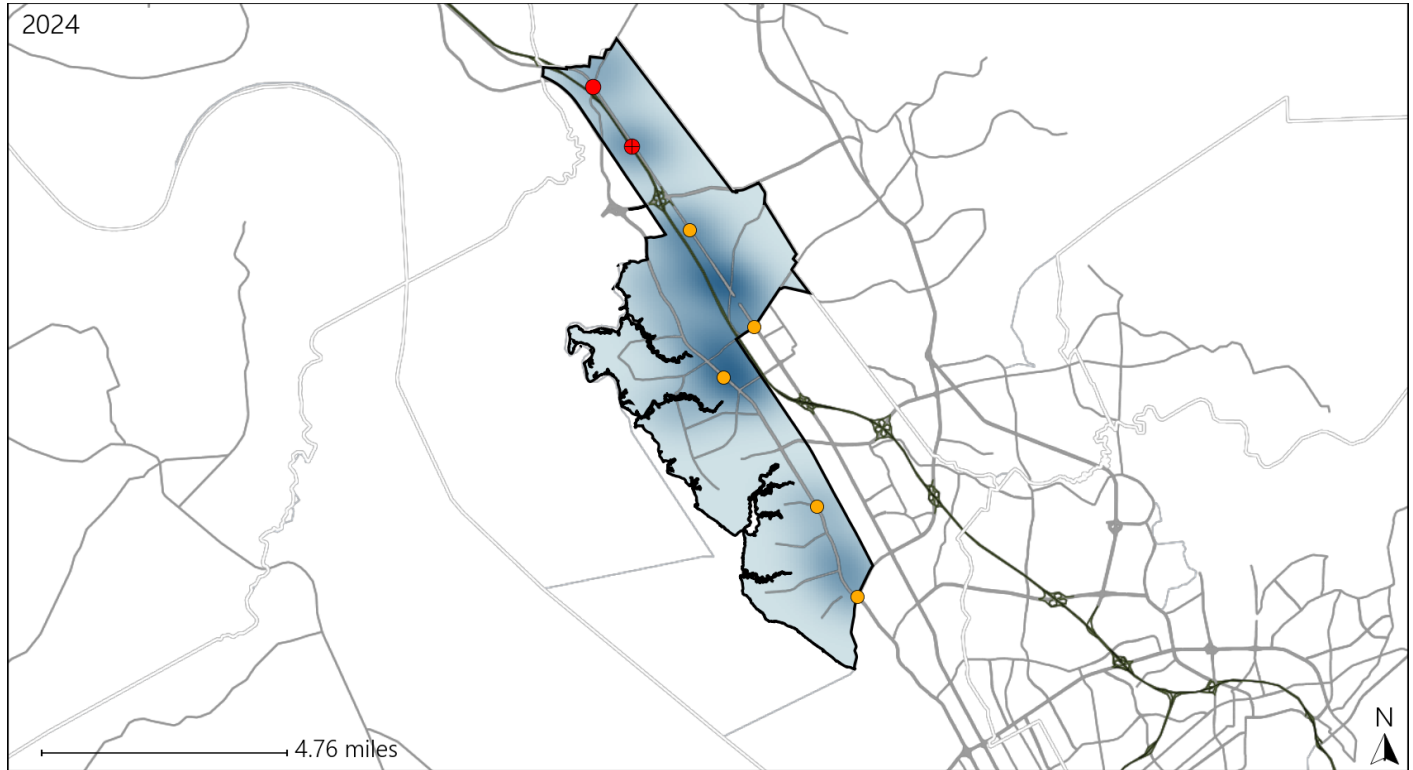


Available Crash Data - Calendar Year (CY)	CY 2021	CY 2022	CY 2023	CY 2024
Total Crashes	910	861	951	882
Fatal Crashes	7	3	3	7
Injury Crashes	368	265	251	247
Speed-Related Fatal Crashes	1	2	2	5
Percent of Speed-Related Fatal Crashes to Total Fatal Crashes	14%	67%	67%	71%
Speed-Related Injury Crashes	75	52	54	41
Percent of Speed-Related Injury Crashes to Total Injury Crashes	20%	20%	22%	17%

Virginia House District 70 Unrestrained Crash Statistics

Report Generated March, 2025

	Count	Highest Time Period(s)	Highest Day(s)	Highest Month(s)
Fatal Crashes	2	6:00am - 8:59am	Saturday • Sunday	June • September
Unrestrained Fatalities	2	6:00pm - 8:59pm (100%)	(100%)	(100%)
Serious Injury Crashes	5	9:00pm - 11:59pm (60%)	Wednesday (40%)	April • July (40%)



House District 70 Unrestrained-Related Crashes

Interstate Crashes

Non-interstate Crashes

● Fatal

● Fatal

● Serious Injury

● Serious Injury

The blue gradient represents the density of all unrestrained-related crashes.

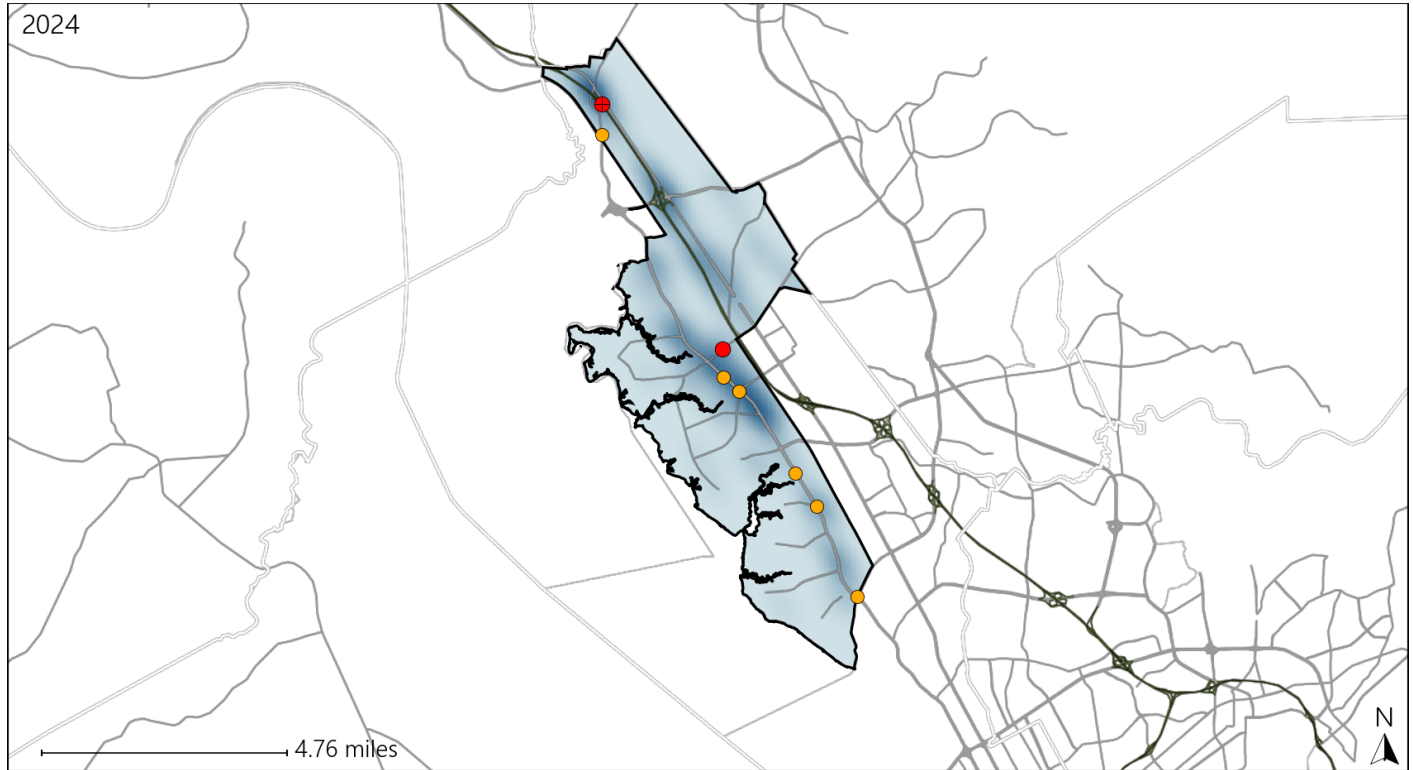


Available Crash Data - Calendar Year (CY)	CY 2021	CY 2022	CY 2023	CY 2024
Total Crashes	910	861	951	882
Fatalities	7	4	3	9
Injuries	559	419	433	410
Unrestrained Fatalities	2	2	1	2
Percent of Unrestrained Fatalities to Total Fatalities	29%	50%	33%	22%
Unrestrained Injuries	34	14	27	22
Percent of Unrestrained Injuries to Total Injuries	6%	3%	6%	5%

Virginia House District 70 Distracted Driving Crash Statistics

Report Generated March, 2025

	Count	Highest Time Period(s)	Highest Day(s)	Highest Month(s)
Fatal Crashes	2	6:00pm - 8:59pm	Monday • Sunday	April • January
Resulting Fatalities	3	Midnight - 2:59am (100%)	(100%)	(100%)
Serious Injury Crashes	6	9:00pm - 11:59pm (50%)	Wednesday (50%)	May (33%)



House District 70 Distracted Driving-Related Crashes

Interstate Crashes

Non-interstate Crashes

● Fatal

● Fatal

● Serious Injury

● Serious Injury

The blue gradient represents the density of all distracted driving-related crashes.



Available Crash Data - Calendar Year (CY)	CY 2021	CY 2022	CY 2023	CY 2024
Total Crashes	910	861	951	882
Fatal Crashes	7	3	3	7
Injury Crashes	368	265	251	247
Distracted Driving-Related Fatal Crashes	0	0	0	2
Percent of Distracted Driving-Related Fatal Crashes to Total Fatal Crashes	0%	0%	0%	29%
Distracted Driving-Related Injury Crashes	106	52	46	33
Percent of Distracted Driving-Related Injury Crashes to Total Injury Crashes	29%	20%	18%	13%