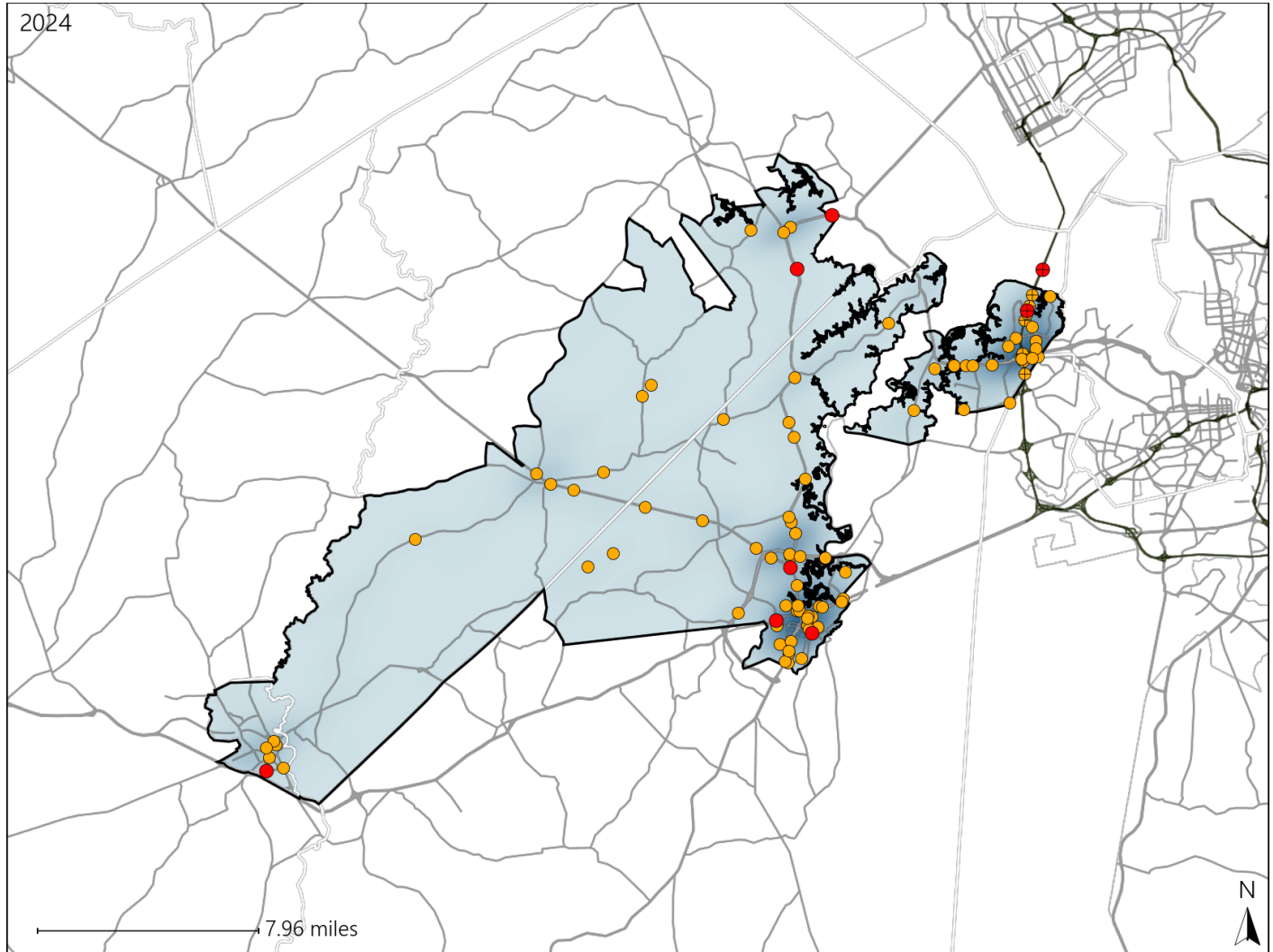


Virginia House District 84 Crash Statistics

Report Generated March, 2025

	Count	Highest Time Period(s)	Highest Day(s)	Highest Month(s)
Fatal Crashes	8	9:00pm - 11:59pm	Saturday	August
Resulting Fatalities	8	Noon - 2:59pm (50%)	(38%)	(38%)
Serious Injury Crashes	85	3:00pm - 5:59pm (22%)	Monday (19%)	August • December (22%)



House District 84 Crashes

Interstate Crashes

- Fatal
- Serious Injury

Non-interstate Crashes

- Fatal
- Serious Injury

The blue gradient represents the density of all crashes.



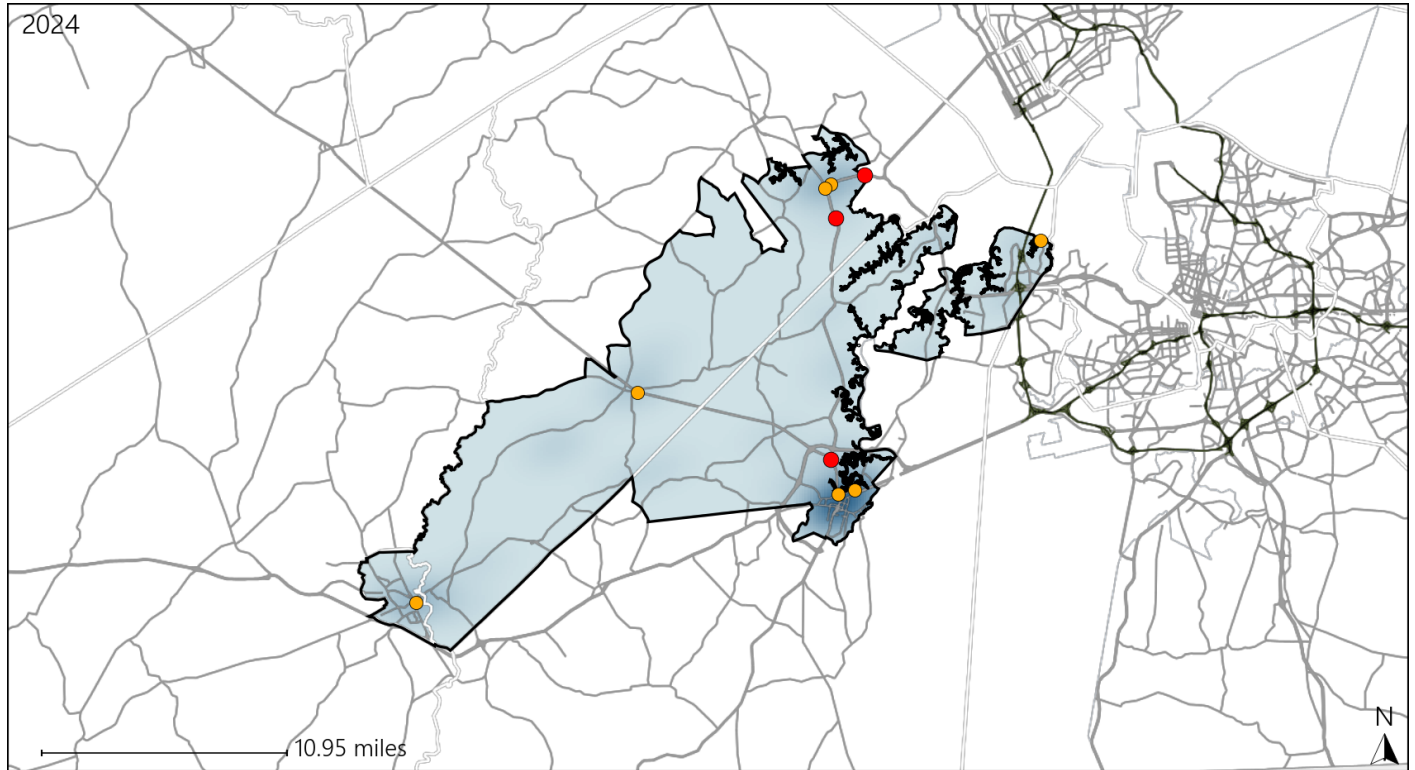
Available Crash Data - Calendar Year (CY)	CY 2021	CY 2022	CY 2023	CY 2024
Total Crashes	1354	1346	1396	1332
Fatal Crashes	11	7	10	8
Injury Crashes	575	583	649	564

Report of Crashes for January 1st - December 31st, 2024

Virginia House District 84 Alcohol Crash Statistics

Report Generated March, 2025

	Count	Highest Time Period(s)	Highest Day(s)	Highest Month(s)
Fatal Crashes	3	3:00pm - 5:59pm	Thursday • Tuesday	February • January
Resulting Fatalities	3	6:00am - 8:59am (66%)	(66%)	(66%)
Serious Injury Crashes	7	6:00pm - 8:59pm (43%)	Friday • Monday (58%)	December (57%)



House District 84 Alcohol-Related Crashes

Interstate Crashes

Non-interstate Crashes

- Fatal
- Serious Injury

- Fatal
- Serious Injury

The blue gradient represents the density of all alcohol-related crashes.

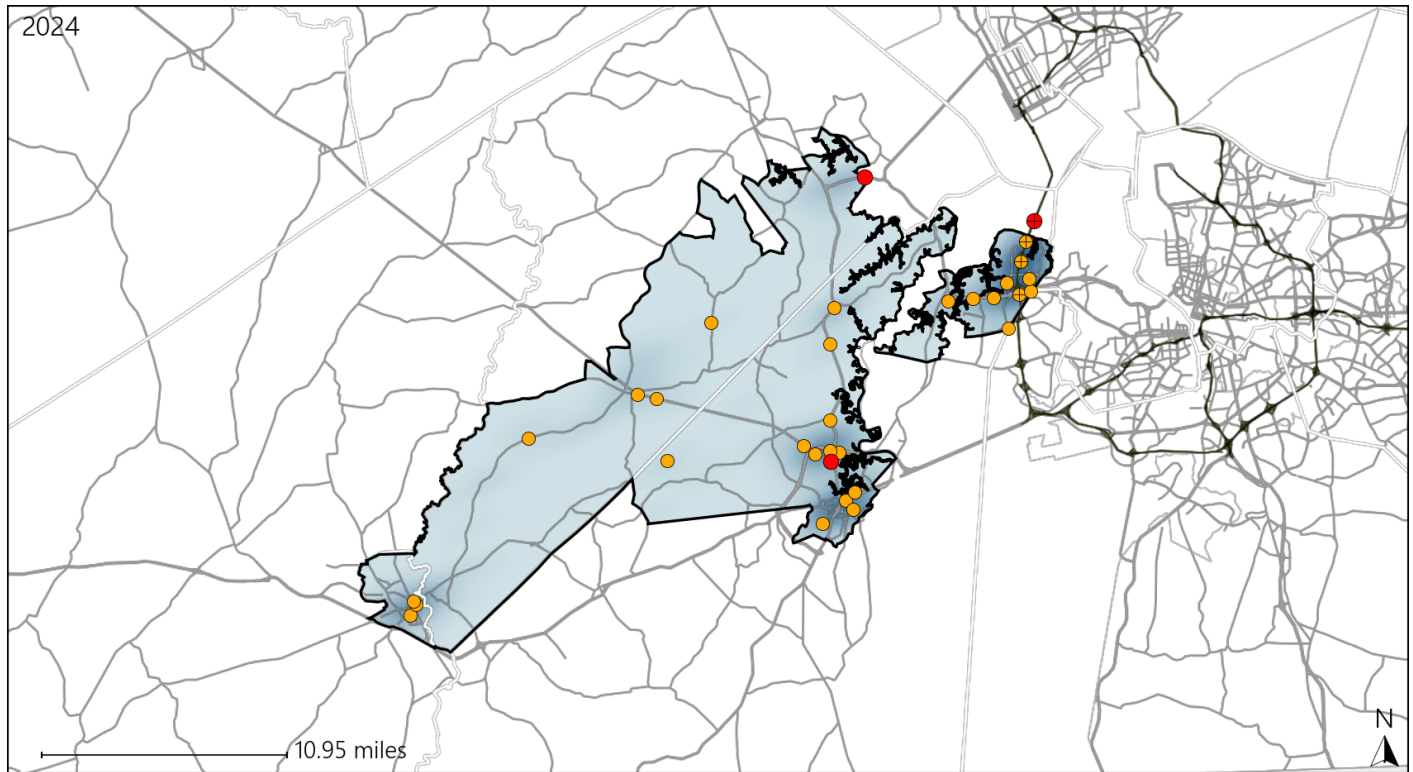


Available Crash Data - Calendar Year (CY)	CY 2021	CY 2022	CY 2023	CY 2024
Total Crashes	1354	1346	1396	1332
Fatal Crashes	11	7	10	8
Injury Crashes	575	583	649	564
Alcohol-Related Fatal Crashes	2	1	3	3
Percent of Alcohol-Related Fatal Crashes to Total Fatal Crashes	18%	14%	30%	38%
Alcohol-Related Injury Crashes	30	48	39	26
Percent of Alcohol-Related Injury Crashes to Total Injury Crashes	5%	8%	6%	5%

Virginia House District 84 Speed Crash Statistics

Report Generated March, 2025



	Count	Highest Time Period(s)	Highest Day(s)	Highest Month(s)
Fatal Crashes	3	9:00pm - 11:59pm	Saturday • Tuesday	August • January
Resulting Fatalities	3	(67%)	(66%)	(66%)
Serious Injury Crashes	29	9:00pm - 11:59pm	Wednesday	May
		Noon - 2:59pm	(24%)	(17%)
		(34%)		



House District 84 Speed-Related Crashes

Interstate Crashes

Non-interstate Crashes

 Fatal Fatal Serious Injury Serious Injury

The blue gradient represents the density of all speed-related crashes.

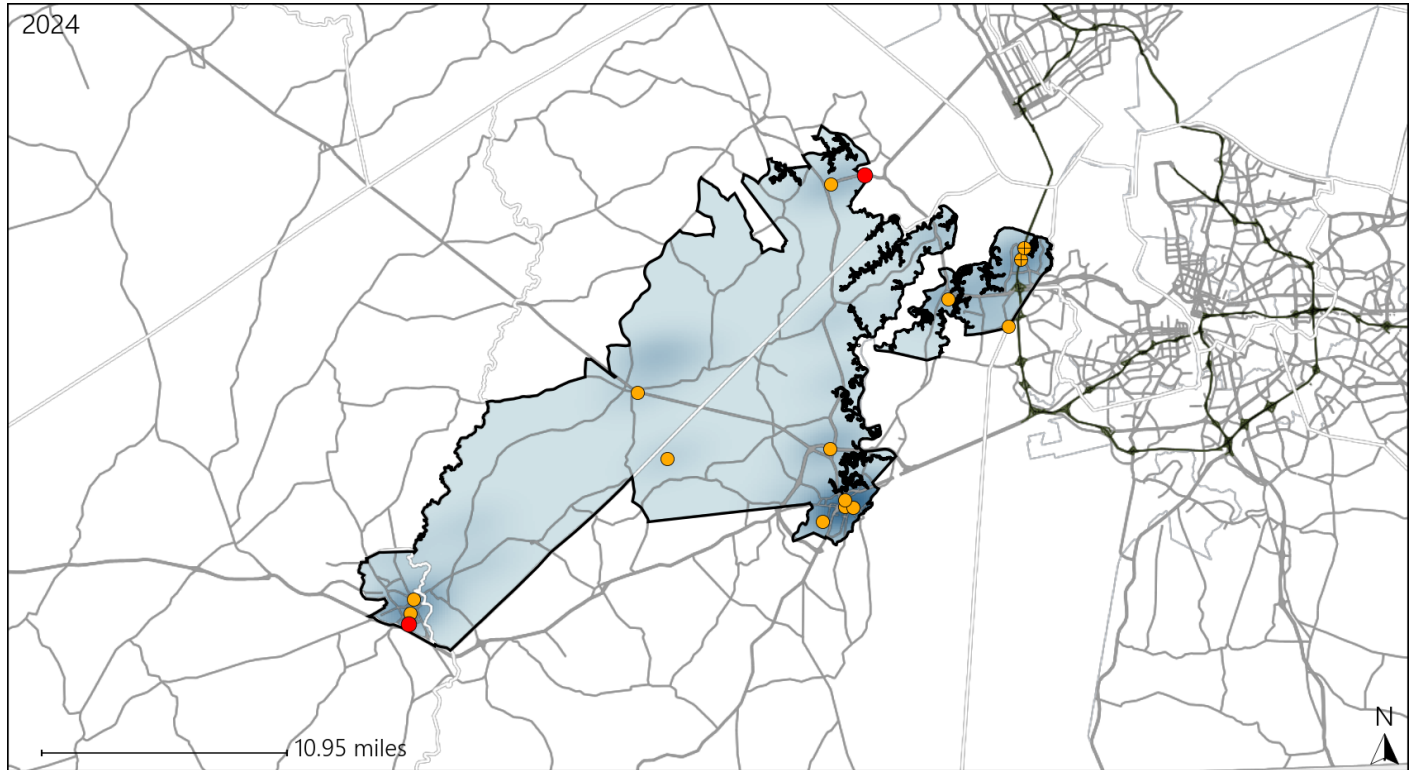


Available Crash Data - Calendar Year (CY)	CY 2021	CY 2022	CY 2023	CY 2024
Total Crashes	1354	1346	1396	1332
Fatal Crashes	11	7	10	8
Injury Crashes	575	583	649	564
Speed-Related Fatal Crashes	4	2	7	3
Percent of Speed-Related Fatal Crashes to Total Fatal Crashes	36%	29%	70%	38%
Speed-Related Injury Crashes	75	83	78	108
Percent of Speed-Related Injury Crashes to Total Injury Crashes	13%	14%	12%	19%

Virginia House District 84 Unrestrained Crash Statistics

Report Generated March, 2025

	Count	Highest Time Period(s)	Highest Day(s)	Highest Month(s)
Fatal Crashes	2	3:00am - 5:59am	Saturday • Tuesday	January • September
Unrestrained Fatalities	2	9:00pm - 11:59pm (100%)	(100%)	(100%)
Serious Injury Crashes	14	Midnight - 2:59am (29%)	Friday • Saturday (42%)	September (21%)



House District 84 Unrestrained-Related Crashes

Interstate Crashes

Non-interstate Crashes

- Fatal
- Serious Injury

- Fatal
- Serious Injury

The blue gradient represents the density of all unrestrained-related crashes.

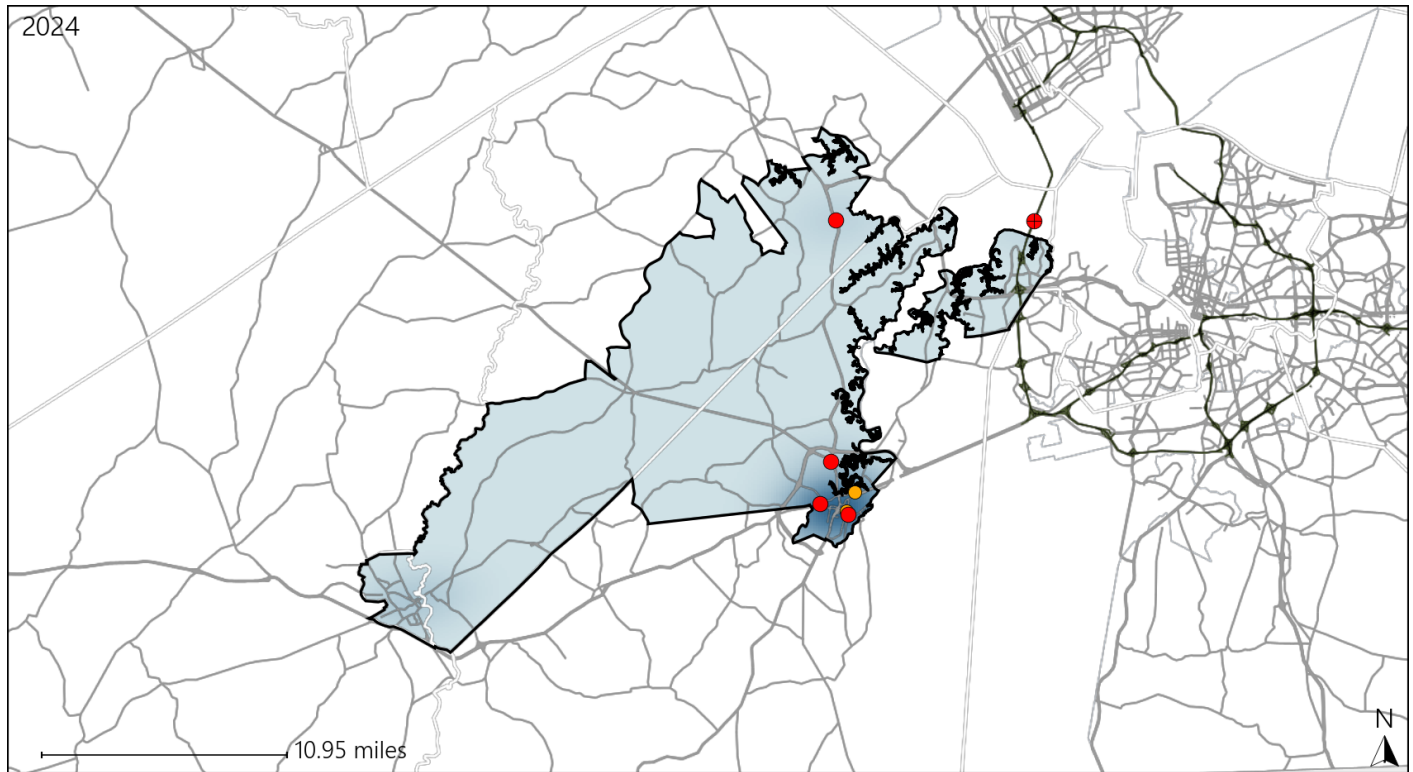


Available Crash Data - Calendar Year (CY)	CY 2021	CY 2022	CY 2023	CY 2024
Total Crashes	1354	1346	1396	1332
Fatalities	11	7	10	8
Injuries	823	855	947	827
Unrestrained Fatalities	3	2	5	2
Percent of Unrestrained Fatalities to Total Fatalities	27%	29%	50%	25%
Unrestrained Injuries	47	46	65	50
Percent of Unrestrained Injuries to Total Injuries	6%	5%	7%	6%

Virginia House District 84 Pedestrian Crash Statistics

Report Generated March, 2025



	Count	Highest Time Period(s)	Highest Day(s)	Highest Month(s)
Fatal Crashes	5	Noon - 2:59pm	Wednesday	August
Pedestrian Fatalities	5	(40%)	(40%)	(40%)
Serious Injury Crashes	2	3:00pm - 5:59pm 6:00pm - 8:59pm	Monday • Saturday	December • November
		(100%)	(100%)	(100%)



House District 84 Pedestrian-Related Crashes

Interstate Crashes

Non-interstate Crashes

 Fatal Fatal Serious Injury Serious Injury

The blue gradient represents the density of all pedestrian-related crashes.

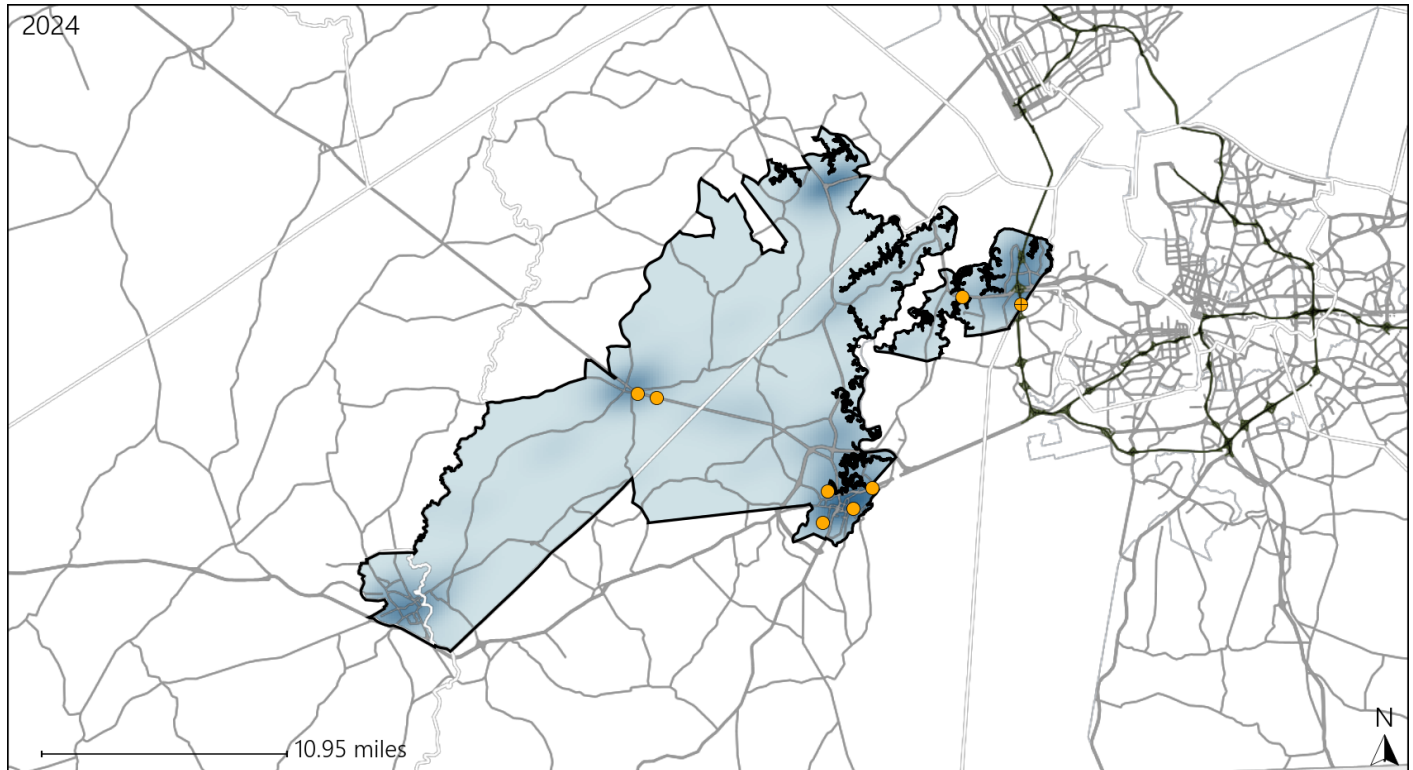


Available Crash Data - Calendar Year (CY)	CY 2021	CY 2022	CY 2023	CY 2024
Total Crashes	1354	1346	1396	1332
Fatal Crashes	11	7	10	8
Injury Crashes	575	583	649	564
Pedestrian-Related Fatal Crashes	1	0	1	5
Percent of Pedestrian-Related Fatal Crashes to Total Fatal Crashes	9%	0%	10%	63%
Pedestrian-Related Injury Crashes	16	17	15	10
Percent of Pedestrian-Related Injury Crashes to Total Injury Crashes	3%	3%	2%	2%

Virginia House District 84 Distracted Driving Crash Statistics

Report Generated March, 2025

	Count	Highest Time Period(s)	Highest Day(s)	Highest Month(s)
Fatal Crashes	0	-	-	-
Resulting Fatalities	0			
Serious Injury Crashes	8	3:00pm - 5:59pm (38%)	Friday (50%)	May (38%)



House District 84 Distracted Driving-Related Crashes

Interstate Crashes

Non-interstate Crashes

- Fatal
- Serious Injury

- Fatal
- Serious Injury

The blue gradient represents the density of all distracted driving-related crashes.



Available Crash Data - Calendar Year (CY)	CY 2021	CY 2022	CY 2023	CY 2024
Total Crashes	1354	1346	1396	1332
Fatal Crashes	11	7	10	8
Injury Crashes	575	583	649	564
Distracted Driving-Related Fatal Crashes	5	0	1	0
Percent of Distracted Driving-Related Fatal Crashes to Total Fatal Crashes	45%	0%	10%	0%
Distracted Driving-Related Injury Crashes	96	94	108	74
Percent of Distracted Driving-Related Injury Crashes to Total Injury Crashes	17%	16%	17%	13%