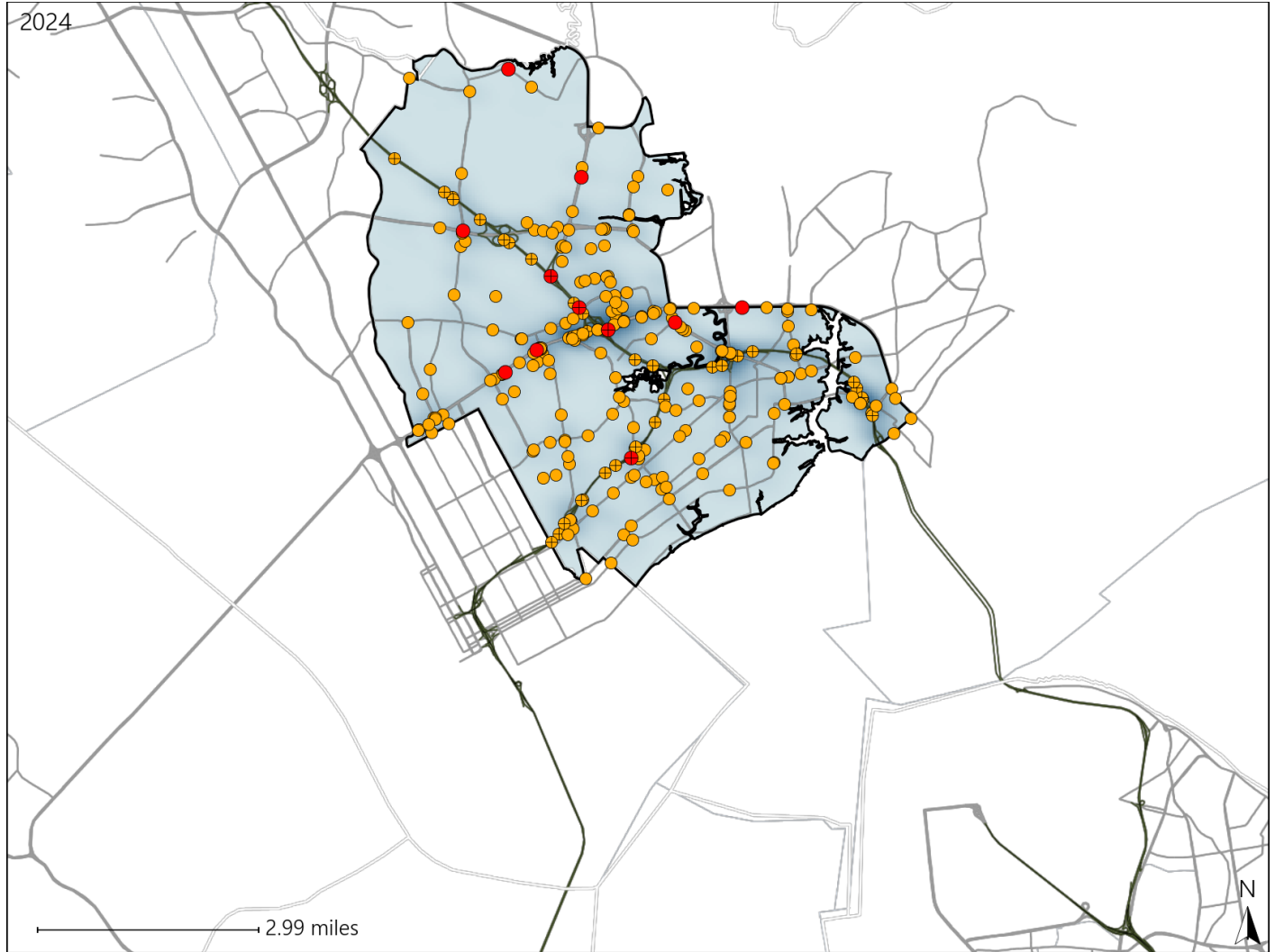


Virginia House District 87 Crash Statistics

Report Generated March, 2025

	Count	Highest Time Period(s)	Highest Day(s)	Highest Month(s)
Fatal Crashes	11	3:00pm - 5:59pm	Friday • Monday	November • September
Resulting Fatalities	11	(27%)	(36%)	(36%)
Serious Injury Crashes	253	3:00pm - 5:59pm	Friday	July
		(19%)	(18%)	(11%)



House District 87 Crashes

Interstate Crashes

- Fatal
- Serious Injury

Non-interstate Crashes

- Fatal
- Serious Injury

The blue gradient represents the density of all crashes.

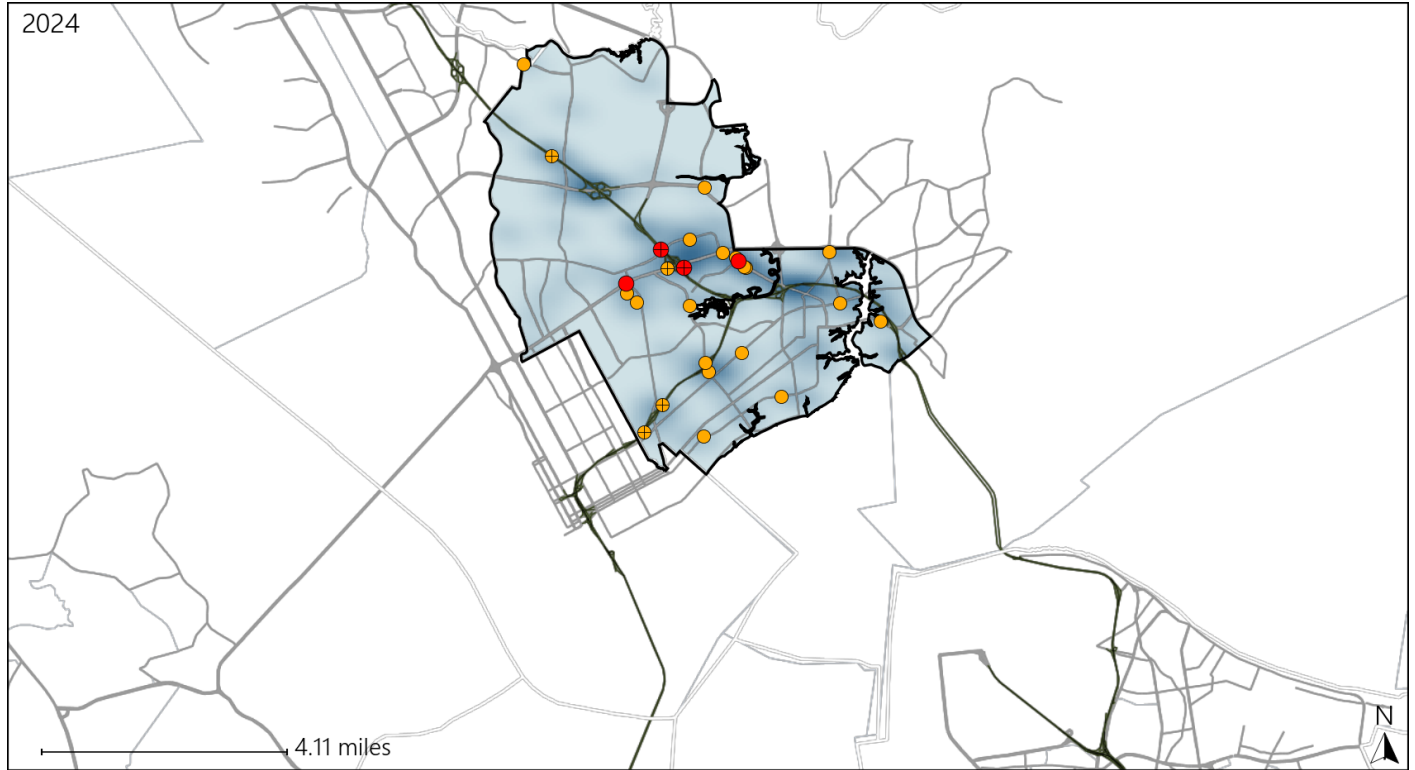


Available Crash Data - Calendar Year (CY)	CY 2021	CY 2022	CY 2023	CY 2024
Total Crashes	2504	2511	2537	2673
Fatal Crashes	10	10	16	11
Injury Crashes	1576	1550	1562	1471

Virginia House District 87 Alcohol Crash Statistics

Report Generated March, 2025

	Count	Highest Time Period(s)	Highest Day(s)	Highest Month(s)
Fatal Crashes	4	Midnight - 2:59am	Monday • Saturday	April • June
Resulting Fatalities	4	(50%)	(50%)	(50%)
Serious Injury Crashes	22	9:00pm - 11:59pm	Friday	July
		(45%)	(32%)	(18%)



House District 87 Alcohol-Related Crashes

Interstate Crashes

Non-interstate Crashes

- Fatal
- Serious Injury

- Fatal
- Serious Injury

The blue gradient represents the density of all alcohol-related crashes.

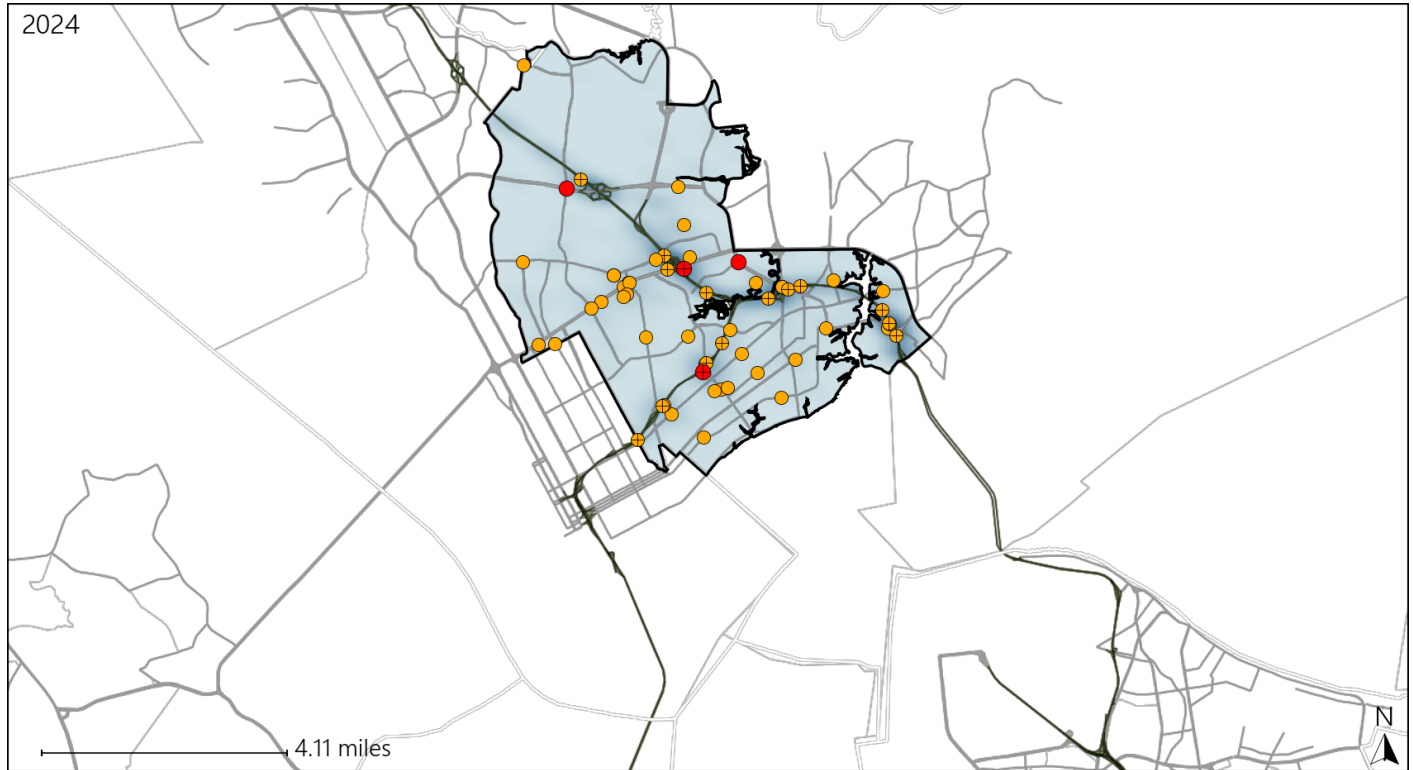


Available Crash Data - Calendar Year (CY)	CY 2021	CY 2022	CY 2023	CY 2024
Total Crashes	2504	2511	2537	2673
Fatal Crashes	10	10	16	11
Injury Crashes	1576	1550	1562	1471
Alcohol-Related Fatal Crashes	0	3	5	4
Percent of Alcohol-Related Fatal Crashes to Total Fatal Crashes	0%	30%	31%	36%
Alcohol-Related Injury Crashes	61	75	97	71
Percent of Alcohol-Related Injury Crashes to Total Injury Crashes	4%	5%	6%	5%

Virginia House District 87 Speed Crash Statistics

Report Generated March, 2025

	Count	Highest Time Period(s)	Highest Day(s)	Highest Month(s)
Fatal Crashes	4	6:00pm - 8:59pm	Friday • Monday	August • June
Resulting Fatalities	4	9:00am - 11:59am (50%)	(50%)	(50%)
Serious Injury Crashes	53	3:00pm - 5:59pm (17%)	Saturday (19%)	July • June (30%)



House District 87 Speed-Related Crashes

Interstate Crashes

- Fatal
- Serious Injury

Non-interstate Crashes

- Fatal
- Serious Injury

The blue gradient represents the density of all speed-related crashes.

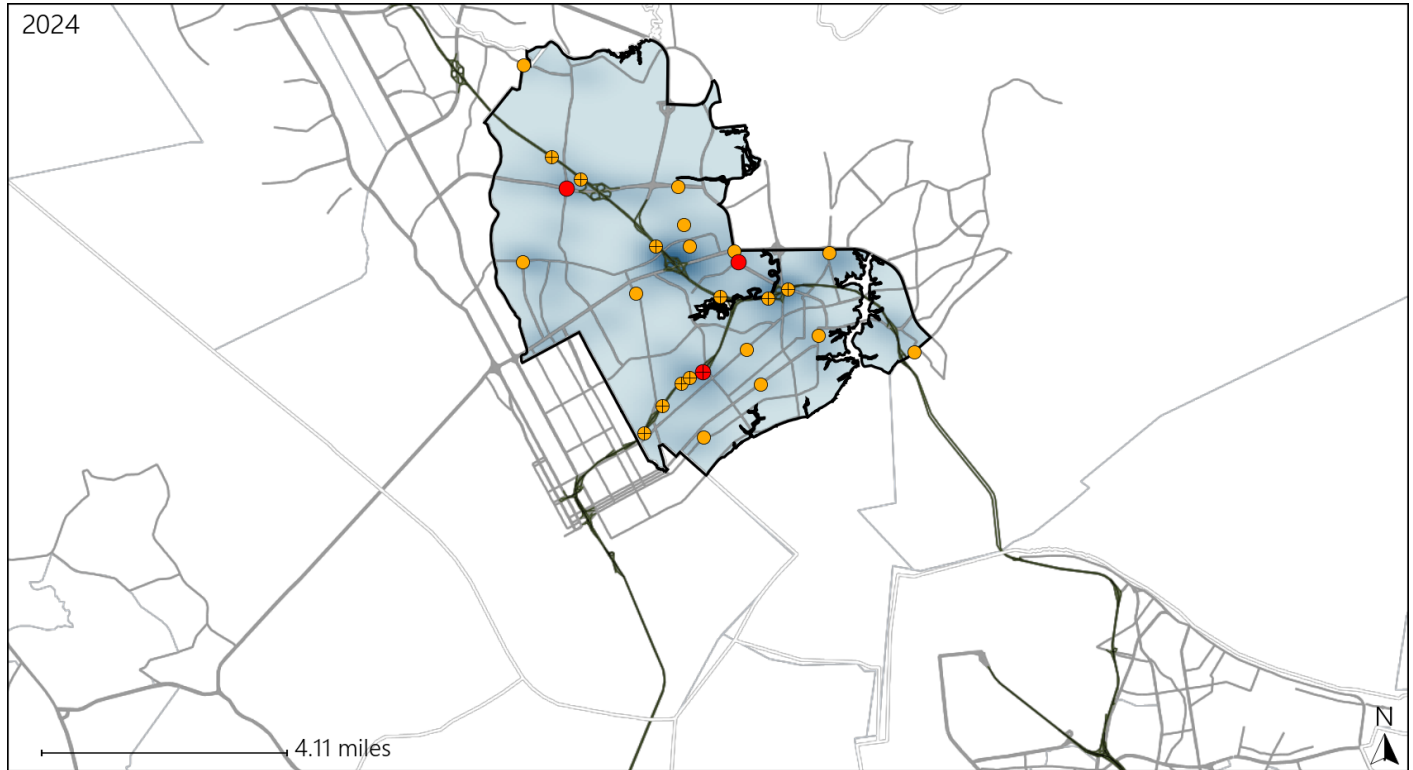


Available Crash Data - Calendar Year (CY)	CY 2021	CY 2022	CY 2023	CY 2024
Total Crashes	2504	2511	2537	2673
Fatal Crashes	10	10	16	11
Injury Crashes	1576	1550	1562	1471
Speed-Related Fatal Crashes	8	5	8	4
Percent of Speed-Related Fatal Crashes to Total Fatal Crashes	80%	50%	50%	36%
Speed-Related Injury Crashes	204	196	219	222
Percent of Speed-Related Injury Crashes to Total Injury Crashes	13%	13%	14%	15%

Virginia House District 87 Unrestrained Crash Statistics

Report Generated March, 2025

	Count	Highest Time Period(s)	Highest Day(s)	Highest Month(s)
Fatal Crashes	3	6:00pm - 8:59pm	Friday • Saturday	August • June
Unrestrained Fatalities	3	9:00am - 11:59am (66%)	(66%)	(66%)
Serious Injury Crashes	23	3:00pm - 5:59pm (26%)	Monday • Saturday (44%)	April (17%)



House District 87 Unrestrained-Related Crashes

Interstate Crashes

Non-interstate Crashes

- Fatal
- Serious Injury

- Fatal
- Serious Injury

The blue gradient represents the density of all unrestrained-related crashes.

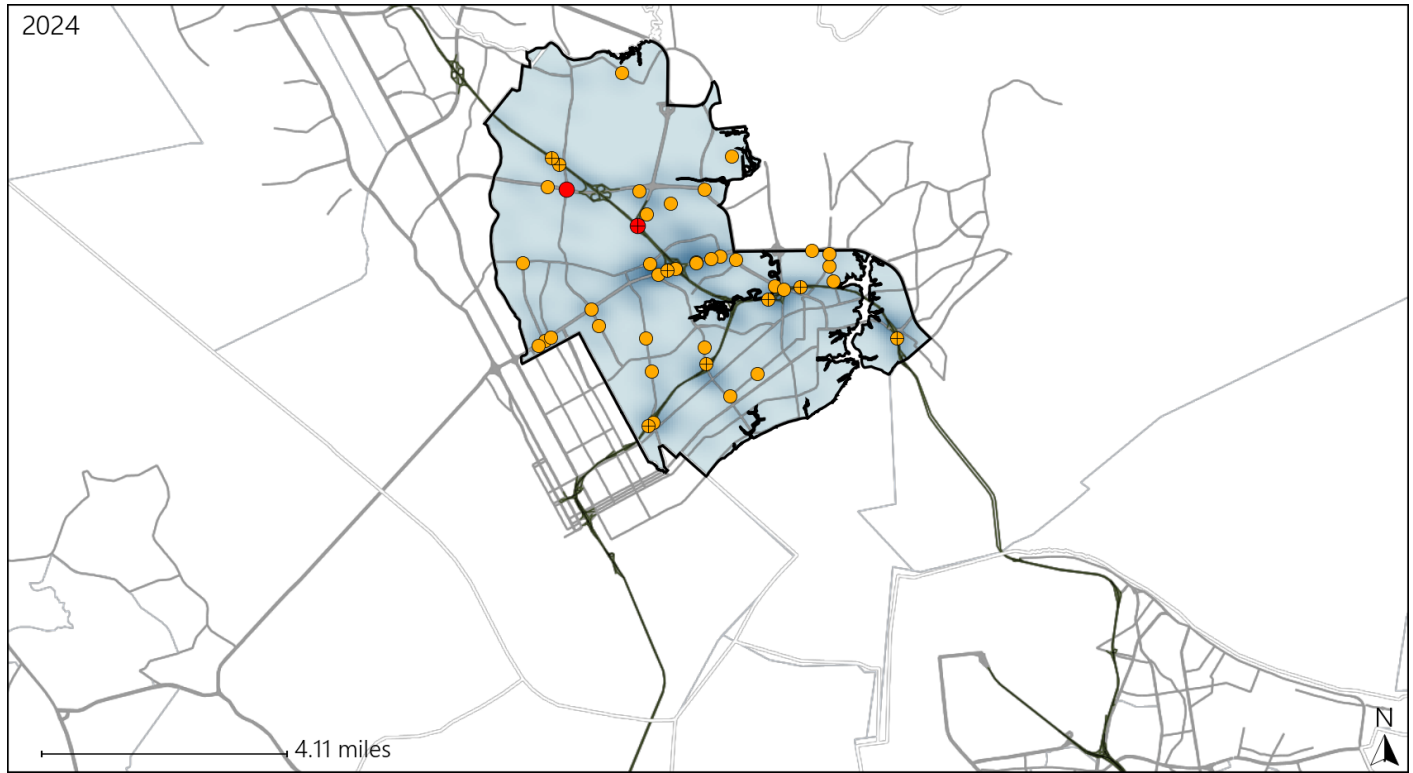


Available Crash Data - Calendar Year (CY)	CY 2021	CY 2022	CY 2023	CY 2024
Total Crashes	2504	2511	2537	2673
Fatalities	10	10	17	11
Injuries	2717	2770	2789	2616
Unrestrained Fatalities	2	3	6	3
Percent of Unrestrained Fatalities to Total Fatalities	20%	30%	35%	27%
Unrestrained Injuries	61	75	73	75
Percent of Unrestrained Injuries to Total Injuries	2%	3%	3%	3%

Virginia House District 87 Distracted Driving Crash Statistics

Report Generated March, 2025

	Count	Highest Time Period(s)	Highest Day(s)	Highest Month(s)
Fatal Crashes	2	3:00pm - 5:59pm	Friday • Monday	February • September
Resulting Fatalities	2	Noon - 2:59pm (100%)	(100%)	(100%)
Serious Injury Crashes	41	3:00pm - 5:59pm 9:00pm - 11:59pm (40%)	Monday (27%)	August (15%)



House District 87 Distracted Driving-Related Crashes

Interstate Crashes

Non-interstate Crashes

● Fatal

● Fatal

⊕ Serious Injury

⊕ Serious Injury

The blue gradient represents the density of all distracted driving-related crashes.



Available Crash Data - Calendar Year (CY)	CY 2021	CY 2022	CY 2023	CY 2024
Total Crashes	2504	2511	2537	2673
Fatal Crashes	10	10	16	11
Injury Crashes	1576	1550	1562	1471
Distracted Driving-Related Fatal Crashes	0	2	1	2
Percent of Distracted Driving-Related Fatal Crashes to Total Fatal Crashes	0%	20%	6%	18%
Distracted Driving-Related Injury Crashes	211	209	247	239
Percent of Distracted Driving-Related Injury Crashes to Total Injury Crashes	13%	13%	16%	16%