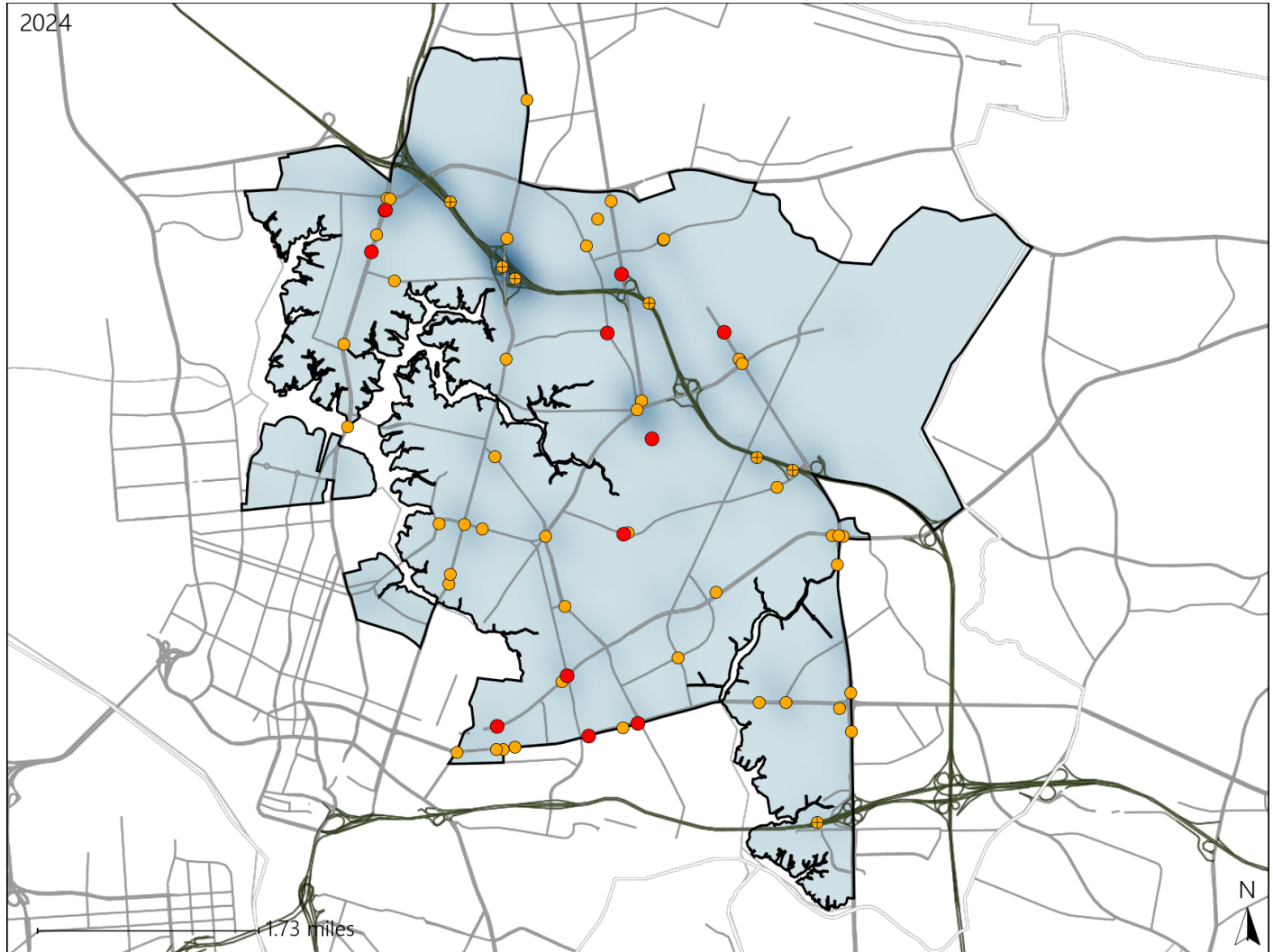


# Virginia House District 93 Crash Statistics

Report Generated March, 2025

	Count	Highest Time Period(s)	Highest Day(s)	Highest Month(s)
<b>Fatal Crashes</b>	<b>11</b>	3:00am - 5:59am	Saturday	February
<b>Resulting Fatalities</b>	<b>11</b>	6:00am - 8:59am (54%)	(45%)	(27%)
<b>Serious Injury Crashes</b>	<b>57</b>	6:00pm - 8:59pm (28%)	Tuesday (19%)	March (19%)



## House District 93 Crashes

Interstate Crashes

- Fatal
- Serious Injury

Non-interstate Crashes

- Fatal
- Serious Injury

The blue gradient represents the density of all crashes.

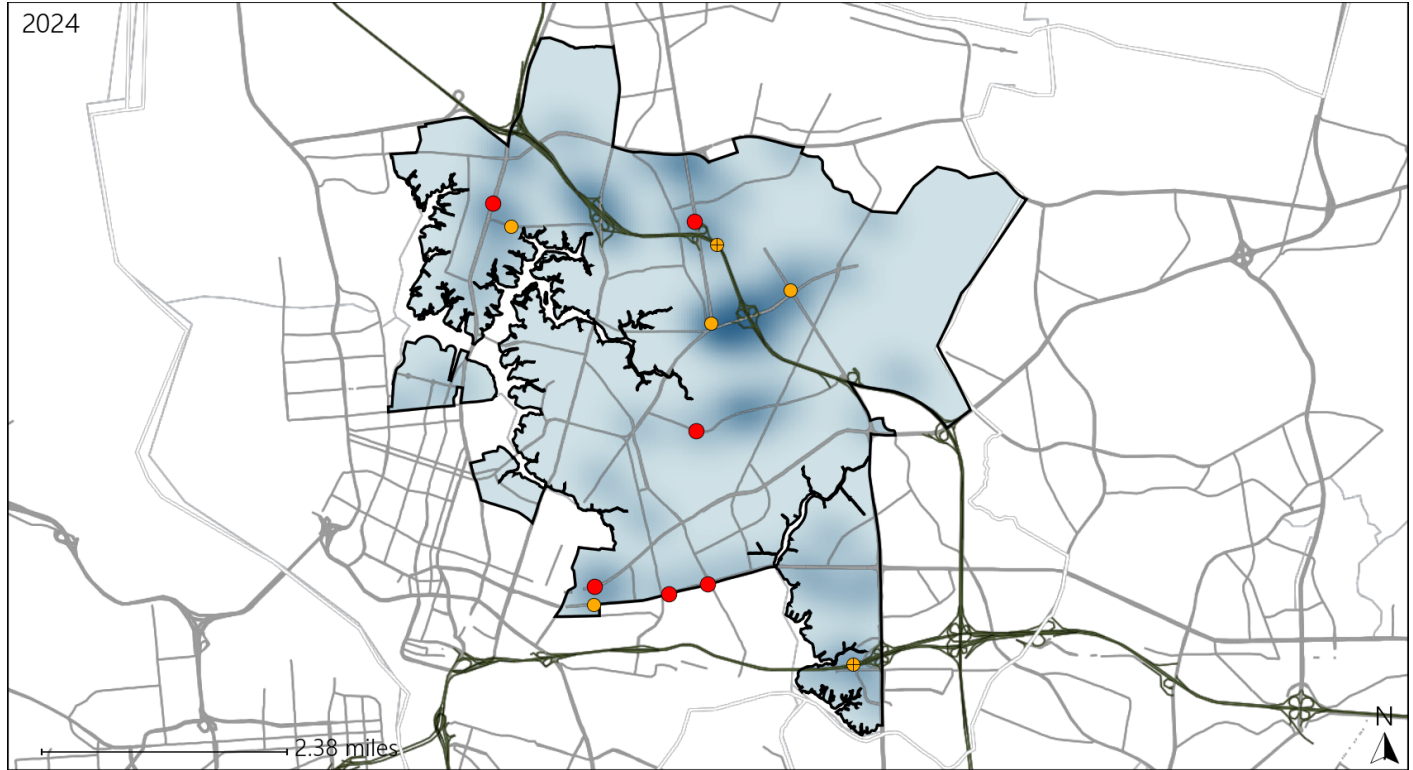


Available Crash Data - Calendar Year (CY)	CY 2021	CY 2022	CY 2023	CY 2024
Total Crashes	1359	1189	1381	1556
Fatal Crashes	12	11	7	11
Injury Crashes	462	412	493	424

# Virginia House District 93 Alcohol Crash Statistics

Report Generated March, 2025

	Count	Highest Time Period(s)	Highest Day(s)	Highest Month(s)
<b>Fatal Crashes</b>	<b>6</b>	<b>3:00am - 5:59am</b>	<b>Saturday</b>	<b>February • January</b>
<b>Resulting Fatalities</b>	<b>6</b>	<b>(50%)</b>	<b>(50%)</b>	<b>(66%)</b>
<b>Serious Injury Crashes</b>	<b>6</b>	<b>6:00pm - 8:59pm</b>	<b>Saturday • Sunday</b>	<b>October • September</b>
		<b>(50%)</b>	<b>(66%)</b>	<b>(66%)</b>



## House District 93 Alcohol-Related Crashes

Interstate Crashes

Non-interstate Crashes

- Fatal
- Serious Injury

- Fatal
- Serious Injury

The blue gradient represents the density of all alcohol-related crashes.



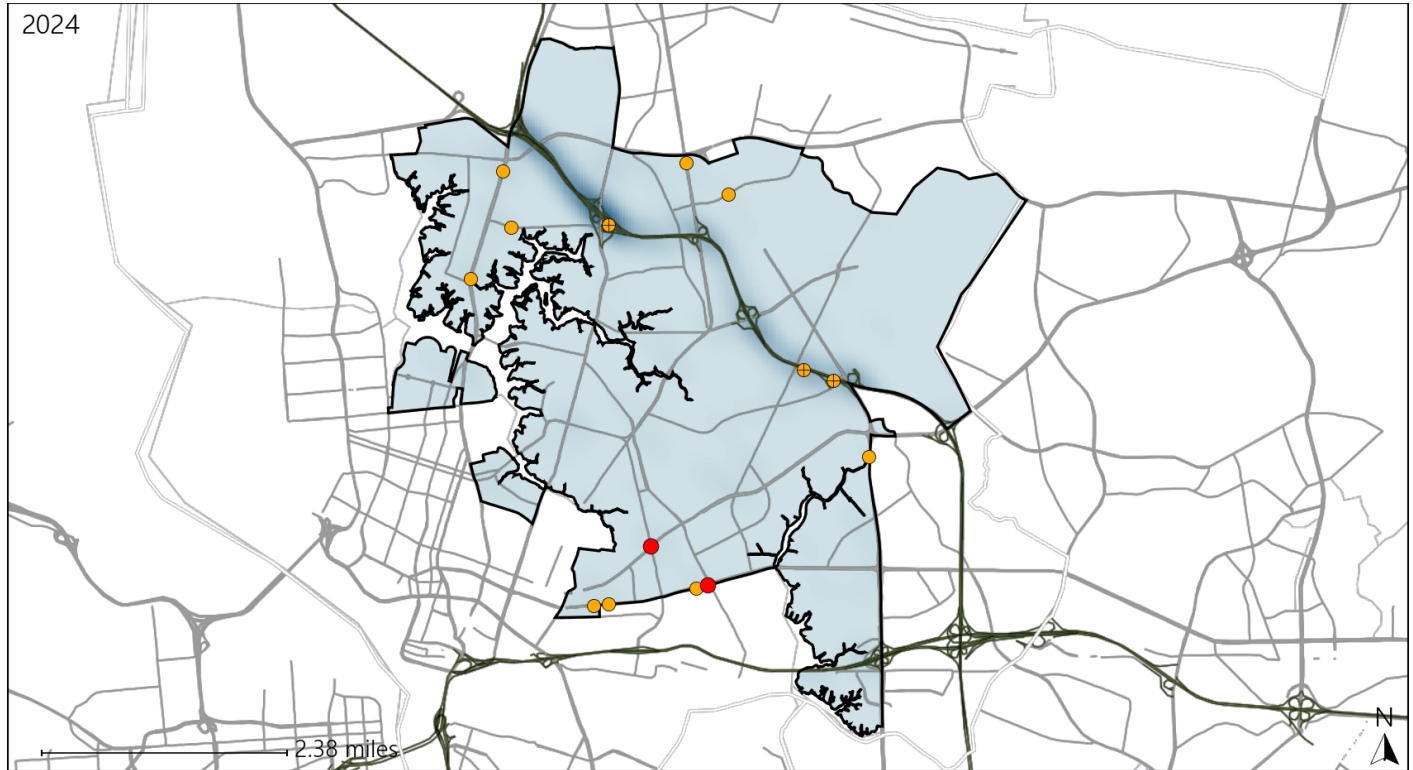
Available Crash Data - Calendar Year (CY)	CY 2021	CY 2022	CY 2023	CY 2024
Total Crashes	1359	1189	1381	1556
Fatal Crashes	12	11	7	11
Injury Crashes	462	412	493	424
Alcohol-Related Fatal Crashes	6	3	3	6
Percent of Alcohol-Related Fatal Crashes to Total Fatal Crashes	50%	27%	43%	55%
Alcohol-Related Injury Crashes	33	30	24	25
Percent of Alcohol-Related Injury Crashes to Total Injury Crashes	7%	7%	5%	6%

Report of Crashes for January 1<sup>st</sup> - December 31<sup>st</sup>, 2024

# Virginia House District 93 Speed Crash Statistics

Report Generated March, 2025

	Count	Highest Time Period(s)	Highest Day(s)	Highest Month(s)
<b>Fatal Crashes</b>	<b>2</b>	6:00am - 8:59am	Wednesday	February • January
<b>Resulting Fatalities</b>	<b>2</b>	9:00pm - 11:59pm (100%)	(100%)	(100%)
<b>Serious Injury Crashes</b>	<b>12</b>	6:00pm - 8:59pm (33%)	Saturday (42%)	March (25%)



## House District 93 Speed-Related Crashes

Interstate Crashes

Non-interstate Crashes

- Fatal
- Serious Injury

- Fatal
- Serious Injury

The blue gradient represents the density of all speed-related crashes.

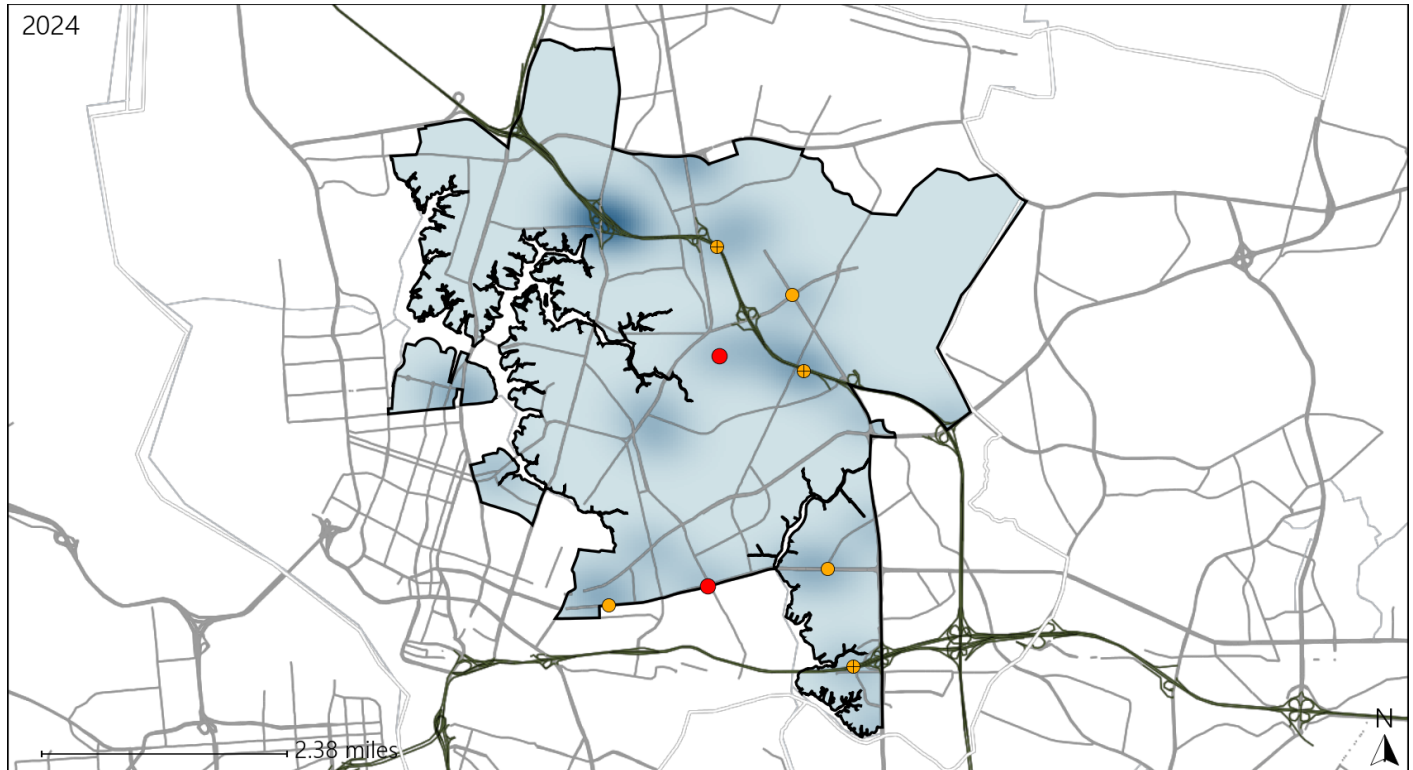


Available Crash Data - Calendar Year (CY)	CY 2021	CY 2022	CY 2023	CY 2024
Total Crashes	1359	1189	1381	1556
Fatal Crashes	12	11	7	11
Injury Crashes	462	412	493	424
Speed-Related Fatal Crashes	6	5	3	2
Percent of Speed-Related Fatal Crashes to Total Fatal Crashes	50%	45%	43%	18%
Speed-Related Injury Crashes	95	91	89	85
Percent of Speed-Related Injury Crashes to Total Injury Crashes	21%	22%	18%	20%

# Virginia House District 93 Unrestrained Crash Statistics

Report Generated March, 2025

	Count	Highest Time Period(s)	Highest Day(s)	Highest Month(s)
<b>Fatal Crashes</b>	<b>2</b>	6:00am - 8:59am	Friday • Wednesday	January • September
<b>Unrestrained Fatalities</b>	<b>2</b>	(100%)	(100%)	(100%)
<b>Serious Injury Crashes</b>	<b>6</b>	6:00pm - 8:59pm	Sunday • Tuesday	October • September
		(67%)	(66%)	(66%)



## House District 93 Unrestrained-Related Crashes

Interstate Crashes

Non-interstate Crashes

- Fatal
- Serious Injury

- Fatal
- Serious Injury

The blue gradient represents the density of all unrestrained-related crashes.

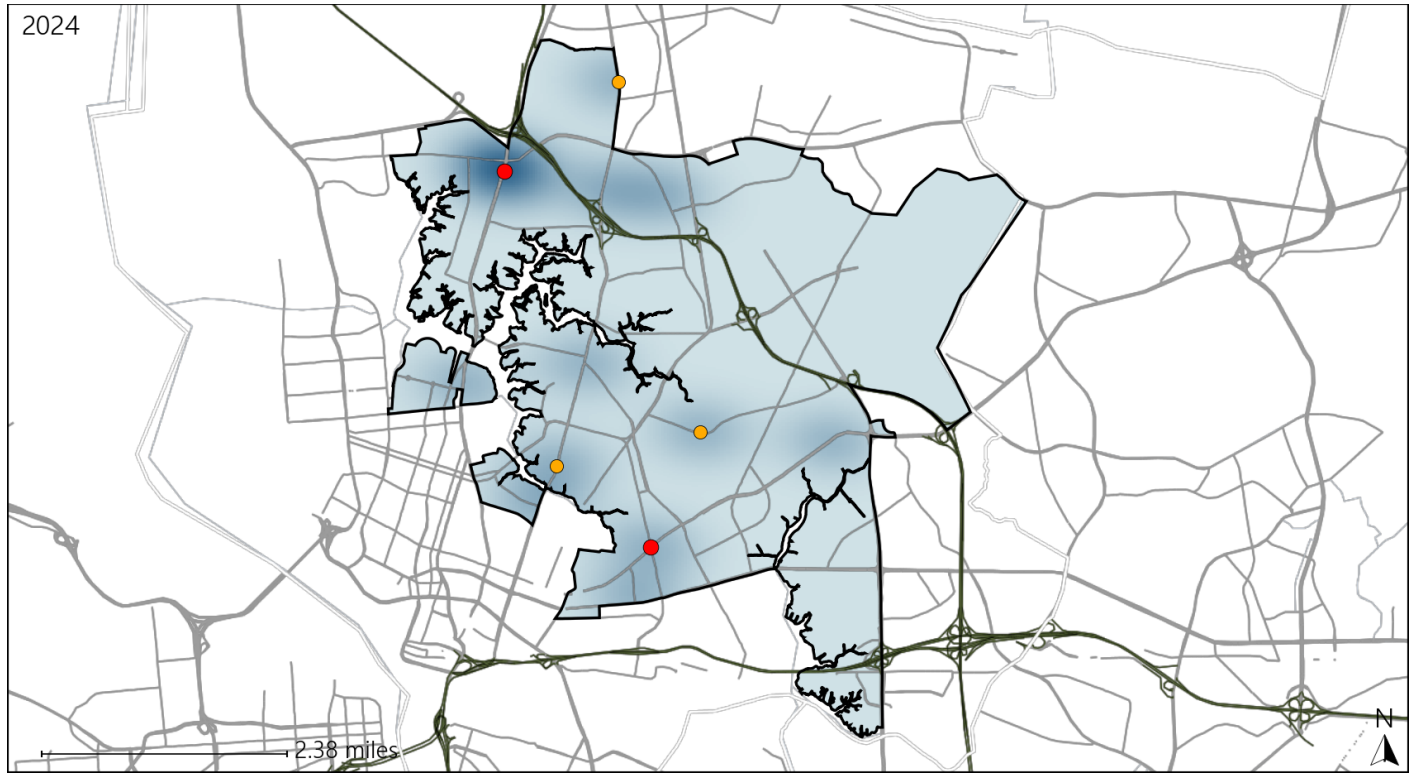


Available Crash Data - Calendar Year (CY)	CY 2021	CY 2022	CY 2023	CY 2024
Total Crashes	1359	1189	1381	1556
Fatalities	13	11	7	11
Injuries	711	656	806	692
Unrestrained Fatalities	4	4	2	2
Percent of Unrestrained Fatalities to Total Fatalities	31%	36%	29%	18%
Unrestrained Injuries	30	29	36	34
Percent of Unrestrained Injuries to Total Injuries	4%	4%	4%	5%

# Virginia House District 93 Bicycle Crash Statistics

Report Generated March, 2025

	Count	Highest Time Period(s)	Highest Day(s)	Highest Month(s)
<b>Fatal Crashes</b>	<b>2</b>	6:00am - 8:59am	Tuesday • Wednesday	February • June
<b>Bicycle Fatalities</b>	<b>2</b>	9:00pm - 11:59pm (100%)	(100%)	(100%)
<b>Serious Injury Crashes</b>	<b>3</b>	9:00pm - 11:59pm Midnight - 2:59am (66%)	Thursday (67%)	May (67%)



## House District 93 Bicycle-Related Crashes

Interstate Crashes

Non-interstate Crashes

● Fatal

● Fatal

⊕ Serious Injury

⊕ Serious Injury

The blue gradient represents the density of all bicycle-related crashes.



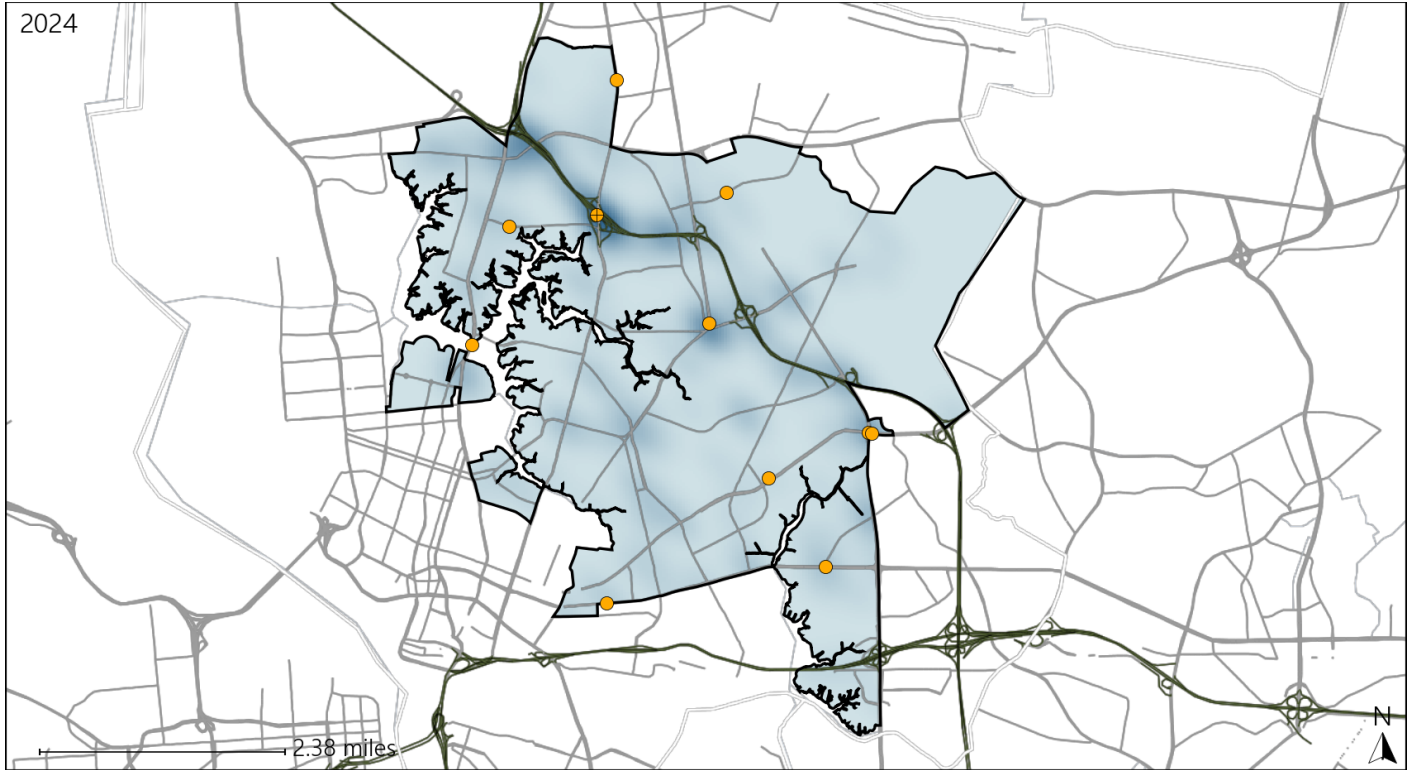
Available Crash Data - Calendar Year (CY)	CY 2021	CY 2022	CY 2023	CY 2024
Total Crashes	1359	1189	1381	1556
Fatal Crashes	12	11	7	11
Injury Crashes	462	412	493	424
Bicycle-Related Fatal Crashes	0	0	0	2
Percent of Bicycle-Related Fatal Crashes to Total Fatal Crashes	0%	0%	0%	18%
Bicycle-Related Injury Crashes	10	11	6	12
Percent of Bicycle-Related Injury Crashes to Total Injury Crashes	2%	3%	1%	3%



# Virginia House District 93 Distracted Driving Crash Statistics

Report Generated March, 2025

	Count	Highest Time Period(s)	Highest Day(s)	Highest Month(s)
<b>Fatal Crashes</b>	<b>0</b>	-	-	-
<b>Resulting Fatalities</b>	<b>0</b>	-	-	-
<b>Serious Injury Crashes</b>	<b>11</b>	<b>3:00pm - 5:59pm</b> (27%)	<b>Friday • Saturday</b> (36%)	<b>October</b> (27%)



## House District 93 Distracted Driving-Related Crashes

Interstate Crashes

- Fatal
- Serious Injury

Non-interstate Crashes

- Fatal
- Serious Injury

The blue gradient represents the density of all distracted driving-related crashes.



Available Crash Data - Calendar Year (CY)	CY 2021	CY 2022	CY 2023	CY 2024
Total Crashes	1359	1189	1381	1556
Fatal Crashes	12	11	7	11
Injury Crashes	462	412	493	424
Distracted Driving-Related Fatal Crashes	2	0	1	0
Percent of Distracted Driving-Related Fatal Crashes to Total Fatal Crashes	17%	0%	14%	0%
Distracted Driving-Related Injury Crashes	75	75	76	76
Percent of Distracted Driving-Related Injury Crashes to Total Injury Crashes	16%	18%	15%	18%